

## APC Human Mesothelin (E296-G580) Protein (C-Fc)

<b>Catalog Number:</b>	801803, 801804
<b>Size:</b>	25 ug, 100 ug
<b>Target Name:</b>	Mesothelin, MPF, MSLN
<b>Regulatory Status:</b>	RUO

### PRODUCT DETAILS

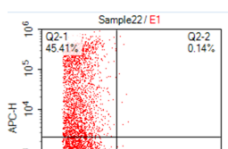
<b>Application:</b>	Flow Cytometry
<b>Format:</b>	Liquid, APC
<b>Expression Host:</b>	HEK293
<b>Species:</b>	Human
<b>Sources:</b>	Human Mesothelin protein (Accession # AAH09272.1) (Glu296-Gly580) with C-terminus Fc tag is expressed in HEK293 cells and conjugated to APC.
<b>Accession Number:</b>	Q13421
<b>Molecular Weight:</b>	The protein has a predicted molecular weight of 60kDa. Under DTT-reducing conditions, it migrates at approximately 65 kDa on SDS-PAGE prior to conjugation.
<b>Affinity Tag:</b>	C-Fc
<b>Formulation:</b>	1xPBS buffer, pH7.4, 0.09% NaN3 with a carrier protein
<b>Endotoxin level:</b>	Not tested
<b>Protein Concentration:</b>	25µg size is bottled at 0.1mg/mL concentration. 100 µg size is bottled at lot specific concentration.
<b>Storage and Handling:</b>	Briefly centrifuge the vial upon receipt. An unopened vial may be stored at 2-8°C for up to six months.

### BACKGROUND INFORMATION

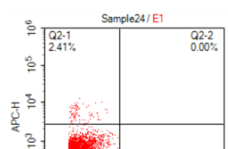
Mesothelin (MSLN), also known as CAK1, is a 70 kDa cell-surface protein cleaved into MPF (30 kDa) and mesothelin (40 kDa). MPF acts as a cytokine, while mesothelin is membrane-bound via glycosylphosphatidylinositol. It is overexpressed in various cancers, including mesotheliomas and ovarian cancer, and interacts with MUC16/CA-125, a cancer biomarker. Elevated mesothelin levels in serum make it a target for diagnostics and therapies, such as the recombinant immunotoxin SS1P, which has shown promise in clinical trials.

### PRODUCT DATA

**A: MSLN CAR-transfected**  
Stained with APC-Mesothelin-Fc



**B: Mock-transfected**  
Stained with APC-Mesothelin-Fc



CHO cells transfected with either Mesothelin CAR or Mock plasmid were stained with APC conjugated Mesothelin (C-Fc) protein at 4ug\_test