

## Technical Data Sheet

### PB Anti-Human HLA-ABC

**Catalog Number:** 102805, 102806

**Size:** 25 tests, 100 tests

**Target Name:** HLA-ABC, Major Histocompatibility Class I, MHC class I

**Regulatory Status:** RUO

#### Product Details

---

**Clone:** W6/32

**Application:** FC

**Reactivity:** Human

**Format:** PB

**Isotype:** Mouse IgG2a

**Antibody Type:** Monoclonal

**Formulation:** Phosphate-buffered solution, pH 7.2, containing 0.09% sodium azide and 0.2% (w/v) BSA

**Protein Concentration:** Supplied at a lot-specific concentration.

**Storage and Handling:** The antibody solution should be stored undiluted between 2°C and 8°C, and protected from prolonged exposure to light. Do not freeze.

**Recommended Usage:** For flow cytometric staining, it is recommended to use 5 µL of this reagent per 0.5-1.0 million cells in a 100 µL volume. Optimal reagent performance should be determined by titration for each specific application.

**Excitation Laser:** Violet laser (405nm)

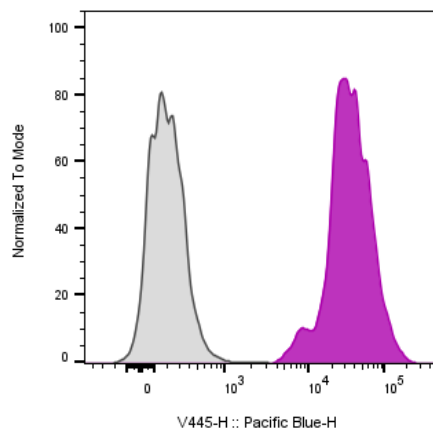
#### Background Information

---

The human leukocyte antigen (HLA) system or complex of genes on chromosome 6 in humans which encode cell-surface proteins responsible for regulation of the immune system.[1] The HLA system is also known as the human version of the major histocompatibility complex (MHC) found in many animals. HLAs corresponding to MHC class I (A, B, and C), all of which are the HLA Class1 group, present peptides from inside the cell. MHC class I molecules are involved in presentation of antigens to CD8+ T cells. They play an important role in cell-mediated immune responses and tumor surveillance.

#### Product Data

---



Human peripheral blood lymphocytes stained either PB Anti-Human HLA-ABC clone W6/32 (color-filled histogram) or an isotype control (gray histogram).