

PE Human PD1 (CD279) Protein (C-Fc)

Catalog Number:	803301, 803302
Size:	25 ug, 100 ug
Target Name:	PD1, PDCD1, CD279, SLEB2
Regulatory Status:	RUO

PRODUCT DETAILS

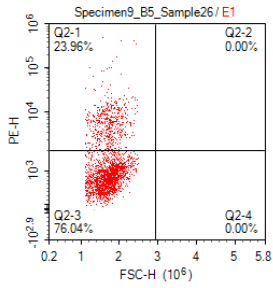
Application:	Flow Cytometry
Format:	Liquid, PE
Expression Host:	HEK293
Species:	Human
Sources:	Human PD-1 protein (NP_005009.2) (Leu25-Gln167) with C-terminus Fc tag is expressed in HEK293 cells and conjugated to PE
Accession Number:	Q15116
Molecular Weight:	The protein has a predicted molecular weight of 44 kDa. Under DTT-reducing conditions, it migrates at approximately 60 kDa on SDS-PAGE prior to conjugation.
Affinity Tag:	C-Fc
Formulation:	1xPBS buffer, pH7.4, 0.09% NaN3 with a carrier protein
Endotoxin level:	Not tested
Protein Concentration:	25µg size is bottled at 0.1mg/mL concentration. 100 µg size is bottled at lot specific concentration.
Storage and Handling:	Briefly centrifuge the vial upon receipt. An unopened vial may be stored at 2-8°C for up to six months.

BACKGROUND INFORMATION

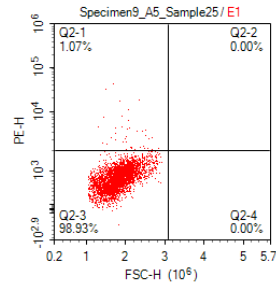
Programmed Death-1 receptor (PD-1, also known as CD279) is a type I transmembrane protein and an immunoregulatory receptor of the CD28/CTLA-4 family. It is expressed on activated T cells, B cells, monocytes, dendritic cells, and some thymocytes. PD-1 binds to ligands PD-L1 and PD-L2, transmitting co-inhibitory signals that suppress T-cell activation, proliferation, cytokine production, and cytotoxic activity by dephosphorylating key signaling molecules. This mechanism promotes immune tolerance and prevents autoimmunity but is exploited by tumors to evade immune surveillance, as many tumors upregulate PD-L1. When tumor-expressed PD-L1 engages PD-1 on immune cells, it blocks T-cell activation and promotes immune exhaustion. Monoclonal antibodies targeting the PD-1/PD-L1 pathway have revolutionized cancer therapy by releasing this immune brake, enhancing anti-tumor immunity and leading to tumor regression in many cancers. Examples include nivolumab and pembrolizumab. This immunotherapy approach is now a major focus in oncology, offering a powerful tool to boost the immune system against cancer and reshape treatment paradigms.

PRODUCT DATA

**A: PD1 CAR-transfected
Stained with PE-PD1-Fc**



**B: Mock-transfected
Stained with PE-PD1-Fc**



CHO cells transfected with either PD1 CAR or Mock plasmid were stained with PE conjugated PD1 (C-Fc) protein at 1ug_test

This product is supplied subject to the terms and conditions at www.innocyto.com/web/terms.php and may only be used as provided in the stated terms. Products are for Research Use Only.