

Biotin Human CD22 Protein (C-His-Avi)

Catalog Number:	803403, 803404
Size:	25 ug, 100 ug
Target Name:	CD22, SIGLEC2, BL-CAM
Regulatory Status:	RUO

PRODUCT DETAILS

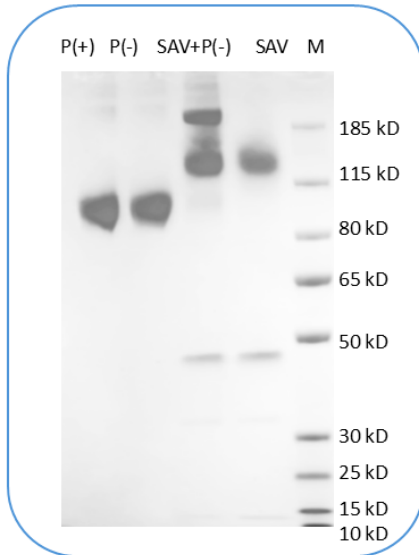
Application:	ELISA, BLI
Format:	Liquid, Biotinylated
Expression Host:	CHO
Species:	Human
Sources:	Human CD22 protein (Asp20-Arg687) with C-terminus His-Avi tag is expressed in CHO cells. This protein was site-specifically labeled with Biotin by BirA ligase.
Accession Number:	P20273
Molecular Weight:	The protein has a predicted molecular weight of 78.6 kDa. Under DTT-reducing conditions, it migrates at approximately 100 kDa on SDS-PAGE.
Affinity Tag:	C-His-Avi
Purity:	>95% based on SDS-PAGE under reducing condition
Formulation:	1xPBS buffer, pH7.4, 0.22 μ m filtered
Endotoxin level:	Not tested
Protein Concentration:	25 μ g size is bottled at 0.2mg/mL concentration. 100 μ g size is supplied at a lot-specific concentration.
Storage and Handling:	Briefly centrifuge the vial upon receipt. An unopened vial can be stored at 4°C for up to 2 weeks, or at -20°C or below for up to six months. The protein may be further diluted to 0.1 mg/mL using 0.22 μ m-filtered PBS buffer (pH 7.4). For long-term storage, the diluted stock solution should be aliquoted and stored at \leq -70°C to minimize freeze-thaw cycles. If additional dilution is required, carrier proteins such as FBS or BSA should be added to maintain protein stability.

BACKGROUND INFORMATION

CD22, also known as Siglec-2 or BL-CAM, is a 130 kDa type I transmembrane glycoprotein and a member of the immunoglobulin superfamily and SIGLEC family. It is expressed in the cytoplasm of pro-B and pre-B cells and on the surface of mature and activated B cells, but not plasma cells. CD22 acts as both an adhesion receptor that binds α 2,6-linked sialic acid-containing glycoproteins (such as CD45RO and CD75) and a key modulator of B cell receptor (BCR) signaling. Through its immunoreceptor tyrosine-based inhibitory motifs (ITIMs), CD22 recruits SHP-1 phosphatase to attenuate BCR-mediated calcium signaling, helping to establish B cell activation thresholds and maintain immune tolerance. CD22 also interacts with signaling molecules including Lyn, Syk, Lck, and

PLCy1, and its function is partly regulated by CD19 and ligand binding. It is involved in B cell-B cell interactions and may play a role in B cell localization within lymphoid tissues.

PRODUCT DATA



Human CD22 protein (C-His-Avi) was biotinylated in vitro using BirA ligase. SDS-PAGE analysis under reducing (P+) and non-reducing (P-) conditions shows the protein has a purity greater than 95%. A gel shift assay using co-incubation with streptavidin indicates that the biotinylation efficiency of the CD22 protein exceeds 95%.

This product is supplied subject to the terms and conditions at www.innocyto.com/web/terms.php and may only be used as provided in the stated terms. Products are for Research Use Only.