

Human HER2 (CD340) Protein (C-His)

Catalog Number:	804201, 804202
Size:	25 ug, 100 ug
Target Name:	HER2, HER-2, ERBB2, CD340, neu, MLN19, NEU, NGL, TKR1
Regulatory Status:	RUO

PRODUCT DETAILS

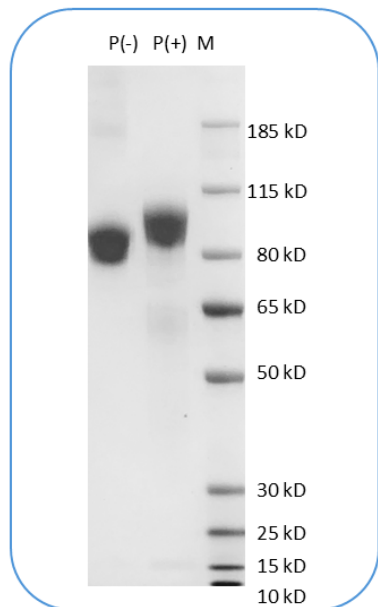
Application:	ELISA, BLI
Format:	Liquid, Purified
Expression Host:	CHO
Species:	Human
Sources:	Recombinant Human Her2 protein (Thr23-Thr652) with C-terminus His tag is expressed in CHO cells.
Accession Number:	P04626
Molecular Weight:	The protein has a predicted molecular weight of 71 kDa. Under DTT-reducing conditions, it migrates at approximately 85 kDa on SDS-PAGE.
Affinity Tag:	C-His
Purity:	>95% based on SDS-PAGE under reducing condition
Formulation:	1xPBS buffer, pH7.4, 0.22 µm filtered
Endotoxin level:	Not tested
Protein Concentration:	25µg size is bottled at 0.2mg/mL concentration. 100 µg size is supplied at a lot-specific concentration.
Storage and Handling:	Briefly centrifuge the vial upon receipt. An unopened vial can be stored at 4°C for up to 2 weeks, or at -20°C or below for up to six months. The protein may be further diluted to 0.1 mg/mL using 0.22 µm-filtered PBS buffer (pH 7.4). For long-term storage, the diluted stock solution should be aliquoted and stored at ≤ -70°C to minimize freeze-thaw cycles. If additional dilution is required, carrier proteins such as FBS or BSA should be added to maintain protein stability.

BACKGROUND INFORMATION

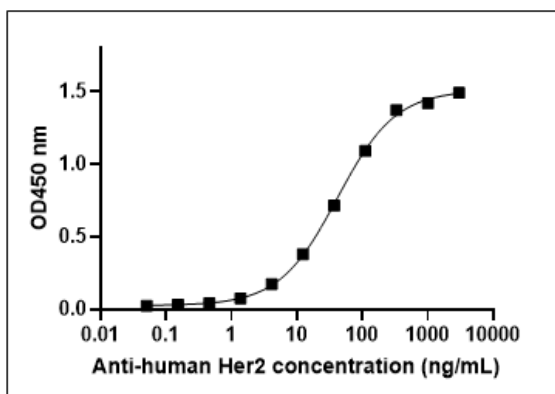
ErbB2, also known as HER2, is a receptor tyrosine kinase that belongs to the ErbB family, which includes EGFR, ErbB2, ErbB3, and ErbB4. It plays a critical role in regulating cell growth, differentiation, and survival. Unlike other members of the ErbB family, ErbB2 does not have a ligand-binding domain. However, it can form homodimers or heterodimers with other ErbB receptors after they bind their respective ligands, leading to activation of downstream signaling pathways. ErbB2 gene amplification and protein overexpression are observed in approximately 20% of invasive breast cancers, contributing to increased aggressiveness and poor prognosis. ErbB2 is also overexpressed in other cancers, including gastric, salivary, and colorectal cancers. Trastuzumab

(Herceptin), a humanized monoclonal antibody targeting ErbB2, is used in the treatment of HER2-positive breast and gastric cancers.

PRODUCT DATA



Human Her2 protein (C-His) on SDS-PAGE under reducing condition (P+) and non-reducing condition (P-). The gel was stained for 1 hour with BlinkBlue (catalog 700102). The purity of this protein appears to be greater than 95% under reducing conditions.



Human Her2 (C-His) protein is coated at 2 μg_mL (200ng_well). Anti-Her2 antibody (clone 340AM1) can detect the Her2 protein in the dose dependent manner. The ED50 is about 40-100 ng_mL .

This product is supplied subject to the terms and conditions at www.innocyto.com/web/terms.php and may only be used as provided in the stated terms. Products are for Research Use Only.