

## Human CD30 (TNFRSF8) Protein (C-His)

<b>Catalog Number:</b>	804601, 804602
<b>Size:</b>	25 ug, 100 ug
<b>Target Name:</b>	TNFRSF8, CD30, Ki-1
<b>Regulatory Status:</b>	RUO

### PRODUCT DETAILS

---

<b>Application:</b>	ELISA, BLI
<b>Format:</b>	Liquid, Purified
<b>Expression Host:</b>	CHO
<b>Species:</b>	Human
<b>Sources:</b>	Recombinant Human CD30 protein (phe19-Lys379) with C-terminus His tag is expressed in CHO cells.
<b>Accession Number:</b>	P28908
<b>Molecular Weight:</b>	The protein has a predicted molecular weight of 40 kDa. Under DTT-reducing conditions, it migrates at approximately 50-80 kDa on SDS-PAGE.
<b>Affinity Tag:</b>	C-His
<b>Purity:</b>	>80% based on SDS-PAGE under reducing condition
<b>Formulation:</b>	1xPBS buffer, pH7.4, 0.22 µm filtered
<b>Endotoxin level:</b>	Not tested
<b>Protein Concentration:</b>	25µg size is bottled at 0.2mg/mL concentration. 100 µg size is supplied at a lot-specific concentration.
<b>Storage and Handling:</b>	Briefly centrifuge the vial upon receipt. An unopened vial can be stored at 4°C for up to 2 weeks, or at -20°C or below for up to six months. The protein may be further diluted to 0.1 mg/mL using 0.22 µm-filtered PBS buffer (pH 7.4). For long-term storage, the diluted stock solution should be aliquoted and stored at ≤ -70°C to minimize freeze-thaw cycles. If additional dilution is required, carrier proteins such as FBS or BSA should be added to maintain protein stability.

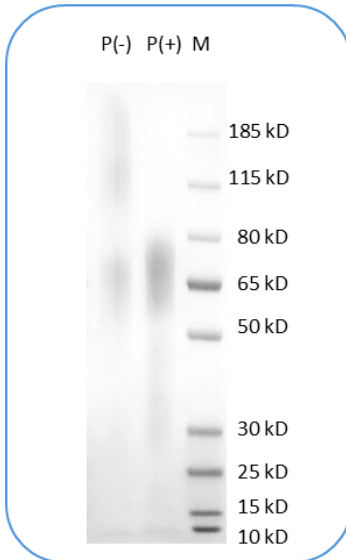
### BACKGROUND INFORMATION

---

CD30, also known as TNFRSF8, is a 120 kDa type I transmembrane glycoprotein from the TNF receptor superfamily. It is expressed on activated T, B, and NK cells, but not resting cells. CD30 is cleaved by metalloproteinases into a soluble form and is highly expressed in classical Hodgkin lymphoma and anaplastic large cell lymphoma. It interacts with proteins like TRAF1, TRAF2, and TRAF5, activating NF-κB signaling. This signaling regulates the proliferative potential of autoreactive CD8 T cells and protects against autoimmunity. CD30 is a therapeutic target in lymphoma immunotherapy and plays a role in autoimmune diseases like rheumatoid arthritis.

## PRODUCT DATA

---



Human CD30 protein (C-His) on SDS-PAGE under reducing condition (P+) and non-reducing condition (P-). The gel was stained for 1 hour with BlinkBlue (catalog 700102). The purity of this protein appears to be greater than 80% based on reducing conditions.