

## Biotin Human Trop2 Protein (C-His-Avi)

<b>Catalog Number:</b>	805703, 805704
<b>Size:</b>	25 ug, 100 ug
<b>Target Name:</b>	TROP2,TACSTD2, GA733-1, M1S1
<b>Regulatory Status:</b>	RUO

### PRODUCT DETAILS

---

<b>Application:</b>	ELISA, BLI
<b>Format:</b>	Liquid, Biotinylated
<b>Expression Host:</b>	CHO
<b>Species:</b>	Human
<b>Sources:</b>	Recombinant Human Trop2 (Gln31-Thr274) with C-terminus His-Avi tag is expressed in CHO cell. This protein was site-specifically labeled with Biotin by BirA ligase.
<b>Accession Number:</b>	P09758
<b>Molecular Weight:</b>	The protein has a predicted molecular weight of 31 kDa. Under DTT-reducing conditions, it migrates at approximately 40-50 kDa on SDS-PAGE.
<b>Affinity Tag:</b>	C-His-Avi
<b>Purity:</b>	>95% based on SDS-PAGE under reducing condition
<b>Formulation:</b>	1xPBS buffer, pH7.4, 0.22 µm filtered
<b>Endotoxin level:</b>	Not tested
<b>Protein Concentration:</b>	25µg size is bottled at 0.2mg/mL concentration. 100 µg size is supplied at a lot-specific concentration.
<b>Storage and Handling:</b>	Briefly centrifuge the vial upon receipt. An unopened vial can be stored at 4°C for up to 2 weeks, or at -20°C or below for up to six months. The protein may be further diluted to 0.1 mg/mL using 0.22 µm-filtered PBS buffer (pH 7.4). For long-term storage, the diluted stock solution should be aliquoted and stored at ≤ -70°C to minimize freeze-thaw cycles. If additional dilution is required, carrier proteins such as FBS or BSA should be added to maintain protein stability.

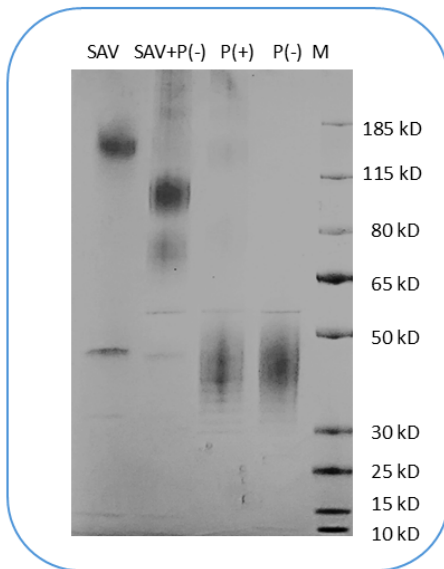
### BACKGROUND INFORMATION

---

TROP-2, also known as TACSTD2, is a 35.7 kD protein that belongs to the EpCAM family. It is a cell surface receptor that can transduce calcium signals. Mutations of this gene are associated with gelatinous drop-like corneal dystrophy. TROP-2 is highly expressed in a variety of epithelial cancers, making it a potential therapeutic target. The cytoplasmic tail of TROP-2 contains potential phosphorylation sites and a phosphatidylinositol binding sequence, suggesting its role in signal transduction. As a member of a family of at least two type I membrane proteins, TROP-2 is closely related to EpCAM, also known as TROP-1, and may play a role in regulating carcinoma cell growth.

## PRODUCT DATA

---



Human Trop2 Protein (C-His-Avi) was biotinylated in vitro using BirA ligase. SDS-PAGE analysis under reducing (P+) and non-reducing (P-) conditions shows the protein has a purity greater than 95%. A gel shift assay using co-incubation with streptavidin indicates that the biotinylation efficiency of the Trop2 protein exceeds 95%.

This product is supplied subject to the terms and conditions at [www.innocyto.com/web/terms.php](http://www.innocyto.com/web/terms.php) and may only be used as provided in the stated terms. Products are for Research Use Only.