

Human Trop2 Protein (C-His)

Catalog Number:	805801, 805802
Size:	25 ug, 100 ug
Target Name:	TROP2,TACSTD2, GA733-1, M1S1
Regulatory Status:	RUO

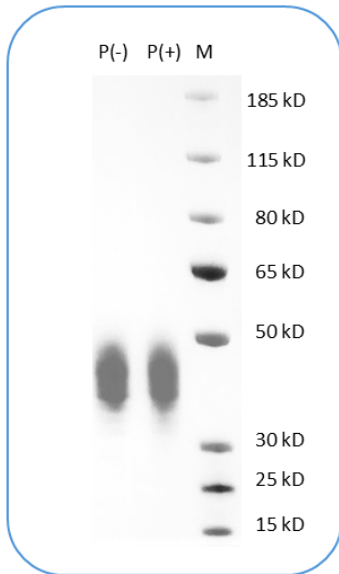
PRODUCT DETAILS

Application:	ELISA, BLI
Format:	Liquid, Purified
Expression Host:	CHO
Species:	Human
Sources:	Recombinant Human Trop2 (Gln24-Thr274) with C-terminus His-Avi tag is expressed in CHO cell.
Accession Number:	P09758
Molecular Weight:	The protein has a predicted molecular weight of 29 kDa. Under DTT-reducing conditions, it migrates at approximately 40-50 kDa on SDS-PAGE.
Affinity Tag:	C-His
Purity:	>95% based on SDS-PAGE under reducing condition
Formulation:	1xPBS buffer, pH7.4, 0.22 µm filtered
Endotoxin level:	Not tested
Protein Concentration:	25µg size is bottled at 0.2mg/mL concentration. 100 µg size is supplied at a lot-specific concentration.
Storage and Handling:	Briefly centrifuge the vial upon receipt. An unopened vial can be stored at 4°C for up to 2 weeks, or at -20°C or below for up to six months. The protein may be further diluted to 0.1 mg/mL using 0.22 µm-filtered PBS buffer (pH 7.4). For long-term storage, the diluted stock solution should be aliquoted and stored at ≤ -70°C to minimize freeze-thaw cycles. If additional dilution is required, carrier proteins such as FBS or BSA should be added to maintain protein stability.

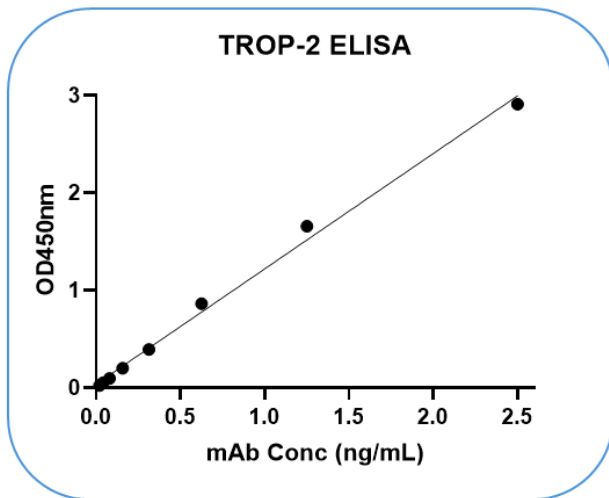
BACKGROUND INFORMATION

TROP-2, also known as TACSTD2, is a 35.7 kD protein that belongs to the EpCAM family. It is a cell surface receptor that can transduce calcium signals. Mutations of this gene are associated with gelatinous drop-like corneal dystrophy. TROP-2 is highly expressed in a variety of epithelial cancers, making it a potential therapeutic target. The cytoplasmic tail of TROP-2 contains potential phosphorylation sites and a phosphatidyl-inositol binding sequence, suggesting its role in signal transduction. As a member of a family of at least two type I membrane proteins, TROP-2 is closely related to EpCAM, also known as TROP-1, and may play a role in regulating carcinoma cell growth.

PRODUCT DATA



Human Trop2 Protein (C-His) on SDS-PAGE under reducing condition (P+) and non-reducing condition (P-). The gel was stained for 1 hour with BlinkBlue (catalog 700102). The purity of this protein appears to be greater than 95% based on reducing conditions.



Human Trop2 protein (C-His) is coated at 100ng_well. Anti-Trop2 antibody can detect the Trop2 protein with a linear range of 0.02 -2.5 ng_mL

This product is supplied subject to the terms and conditions at www.innocyto.com/web/terms.php and may only be used as provided in the stated terms. Products are for Research Use Only.