

Technical Data Sheet

Human SECTM1 Protein (C-His-Avi)

Catalog Number: 806901, 806902

Size: 25 ug, 100 ug

Target Name: SECTM1, K12

Regulatory Status: RUO

Product Details

Application: ELISA, BLI

Format: Liquid, Purified

Expression Host: CHO

Species: Human

Sources: Recombinant Human SECTM1 (Gln29-Gly145) with C-terminus His-Avi tag is expressed in CHO cell.

Accession Number: Q8WVN6

Molecular Weight: The protein has a predicted molecular weight of 16.3 kDa. Under DTT-reducing conditions, it migrates at approximately 20 kDa on SDS-PAGE.

Affinity Tag: C-His-Avi

Purity: >95% based on SDS-PAGE under reducing condition

Formulation: 1xPBS buffer, pH7.4, 0.22 µm filtered

Endotoxin level: Not tested

Protein Concentration: 25µg size is bottled at 0.2mg/mL concentration. 100 µg size is supplied at a lot-specific concentration.

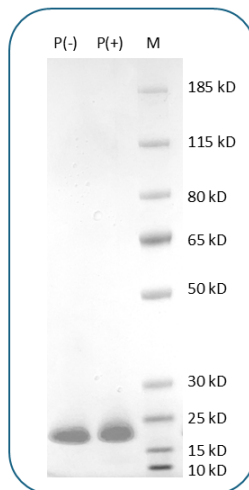
Storage and Handling: Briefly centrifuge the vial upon receipt. An unopened vial can be stored at 4°C for up to 2 weeks, or at -20°C or below for up to six months. The protein may be further diluted to 0.1 mg/mL using 0.22 µm-filtered PBS buffer (pH 7.4). For long-term storage, the diluted stock solution should be aliquoted and stored at ≤ -70°C to minimize freeze-thaw cycles. If additional dilution is required, carrier proteins such as FBS or BSA should be added to maintain protein stability.

Background Information

Secreted and transmembrane protein 1 (SECTM1), also known as K12, is a type I transmembrane and secreted glycoprotein of the SECTM family. It exists in both a ~27 kDa membrane-bound form and a ~20 kDa soluble form, containing two Ig-like domains and an N-linked glycosylation motif at its N-terminus. SECTM1 is primarily expressed in peripheral blood leukocytes, particularly granulocytes, and is also highly expressed in various cancer cells such as melanoma, breast cancer, and leukemia. Its expression can be significantly upregulated by IFN-γ, especially in pathological contexts like thymus disorders. SECTM1 is found in a perinuclear Golgi-like pattern, and while surface expression is often undetectable, it may rapidly be cleaved to form the soluble version. Functionally, SECTM1 is involved in hematopoietic and immune system processes and acts as a natural ligand for CD7. Through its interaction with CD7, SECTM1 promotes T cell activation, proliferation, and cytokine

production, enhances monocyte migration via the PI3K pathway, and boosts NK cell activation marker expression. These roles make it a potential target for modulating immune responses in autoimmune diseases, allogeneic transplantation, and IFN- γ -related pathologies.

Product Data



Human SECTM1 Protein (C-His-Avi) on SDS-PAGE under reducing condition (P+) and non-reducing condition (P-). The gel was stained for 1 hour with BlinkBlue (catalog 700102). The purity of this protein appears to be greater than 95%?