

Human CTLA4 (CD152) Protein (C-His-Avi)

Catalog Number:	807801, 807802
Size:	25 ug, 100 ug
Target Name:	CTLA4, CD152
Regulatory Status:	RUO

PRODUCT DETAILS

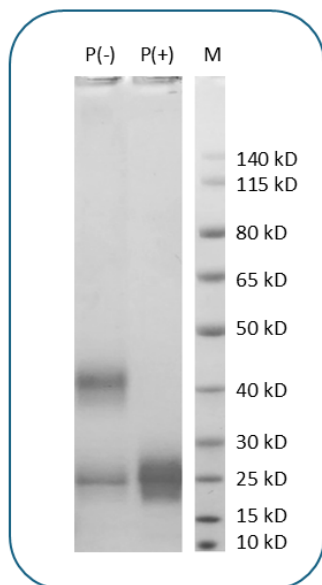
Application:	ELISA, BLI
Format:	Liquid, Purified
Expression Host:	CHO
Species:	Human
Sources:	Recombinant Human CTLA4 Protein (Ala37-Phe162) with C-terminus His-Avi-tag is expressed in CHO cell.
Accession Number:	P16410
Molecular Weight:	The protein has a predicted molecular weight of 17.1 kDa. Under DTT-reducing conditions, it migrates at approximately 20 kDa on SDS-PAGE.
Affinity Tag:	C-His-Avi
Purity:	>95% based on SDS-PAGE under reducing condition
Formulation:	1xPBS buffer, pH7.4, 0.22 µm filtered
Endotoxin level:	Not tested
Protein Concentration:	25µg size is bottled at 0.2mg/mL concentration. 100 µg size is supplied at a lot-specific concentration.
Storage and Handling:	Briefly centrifuge the vial upon receipt. An unopened vial can be stored at 4°C for up to 2 weeks, or at -20°C or below for up to six months. The protein may be further diluted to 0.1 mg/mL using 0.22 µm-filtered PBS buffer (pH 7.4). For long-term storage, the diluted stock solution should be aliquoted and stored at ≤ -70°C to minimize freeze-thaw cycles. If additional dilution is required, carrier proteins such as FBS or BSA should be added to maintain protein stability.

BACKGROUND INFORMATION

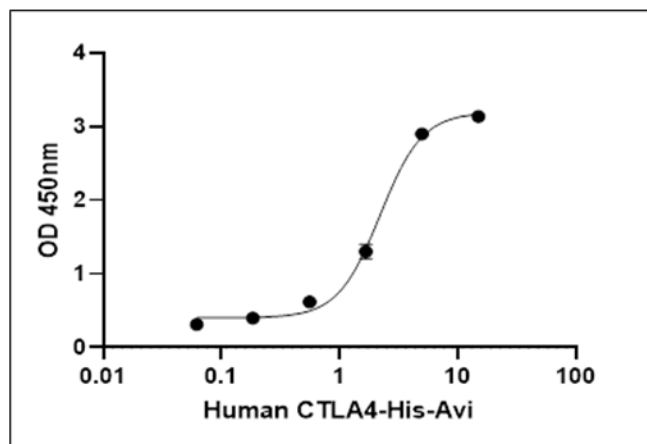
Cytotoxic T-lymphocyte-associated protein 4 (CTLA-4), also known as CD152, is an immune checkpoint receptor found on T cells. It shares 30% homology with CD28 and binds to the same ligands, B7.1/CD80 and B7.2/CD86, but with higher affinity. After T-cell activation, increased CTLA-4 expression leads to immune suppression by binding to CD80/CD86, inhibiting further T-cell activation through a process called trans-endocytosis. CTLA-4 is crucial for immune regulation and tolerance, especially on regulatory T cells (Tregs). Soluble CTLA-4 (sCTLA-4) further enhances Treg function and is linked to autoimmune diseases like type 1 diabetes. Additionally, CTLA-4 plays a role in chronic lymphocytic leukemia (CLL) progression. Due to its immune-modulatory role, CTLA-4 is

targeted in cancer therapy. Ipilimumab, a monoclonal antibody that blocks CTLA-4, is approved for melanoma and is being explored for other cancers.

PRODUCT DATA



Human CTLA4 Protein (C-His-Avi) on SDS-PAGE under reducing condition (P+) and non-reducing condition (P-). The gel was stained for 1 hour with BlinkBlue (catalog 700102). The purity of this protein appears to be greater than 95%.



Human B7-1 with Fc tag is coated at 2ug/mL (200ng/well). Biotinylated human CTLA4 (C-His-Avi) can bind B7-1 in dose-dependent manner with the ED50 of 2-10 ng/mL

This product is supplied subject to the terms and conditions at www.innocyto.com/web/terms.php and may only be used as provided in the stated terms. Products are for Research Use Only.