

## Human CTLA4 (CD152) Protein (C-Fc)

|                           |                |
|---------------------------|----------------|
| <b>Catalog Number:</b>    | 808201, 808202 |
| <b>Size:</b>              | 25 ug, 100 ug  |
| <b>Target Name:</b>       | CTLA4, CD152   |
| <b>Regulatory Status:</b> | RUO            |

### PRODUCT DETAILS

---

|                               |  |
|-------------------------------|--|
| <b>Application:</b>           | ELISA, BLI   |
| <b>Format:</b>                | Liquid, Purified   |
| <b>Expression Host:</b>       | CHO  |
| <b>Species:</b>               | Human  |
| <b>Sources:</b>               | Recombinant Human CTLA4 Protein (Ala37-Phe162) with C-terminus Fc-tag is expressed in CHO cell.  |
| <b>Accession Number:</b>      | P16410   |
| <b>Molecular Weight:</b>      | The protein has a predicted molecular weight of 39.7 kDa. Under DTT-reducing conditions, it migrates at approximately 50 kDa on SDS-PAGE.  |
| <b>Affinity Tag:</b>          | C-Fc   |
| <b>Purity:</b>                | >95% based on SDS-PAGE under reducing condition  |
| <b>Formulation:</b>           | 1xPBS buffer, pH7.4, 0.22 µm filtered  |
| <b>Endotoxin level:</b>       | Not tested   |
| <b>Protein Concentration:</b> | 25µg size is bottled at 0.2mg/mL concentration. 100 µg size is supplied at a lot-specific concentration.   |
| <b>Storage and Handling:</b>  | Briefly centrifuge the vial upon receipt. An unopened vial can be stored at 4°C for up to 2 weeks, or at -20°C or below for up to six months. The protein may be further diluted to 0.1 mg/mL using 0.22 µm-filtered PBS buffer (pH 7.4). For long-term storage, the diluted stock solution should be aliquoted and stored at ≤ -70°C to minimize freeze-thaw cycles. If additional dilution is required, carrier proteins such as FBS or BSA should be added to maintain protein stability. |

### BACKGROUND INFORMATION

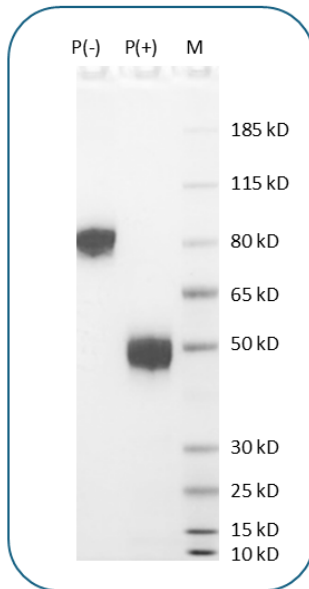
---

Cytotoxic T-lymphocyte-associated protein 4 (CTLA-4), also known as CD152, is an immune checkpoint receptor found on T cells. It shares 30% homology with CD28 and binds to the same ligands, B7.1/CD80 and B7.2/CD86, but with higher affinity. After T-cell activation, increased CTLA-4 expression leads to immune suppression by binding to CD80/CD86, inhibiting further T-cell activation through a process called trans-endocytosis. CTLA-4 is crucial for immune regulation and tolerance, especially on regulatory T cells (Tregs). Soluble CTLA-4 (sCTLA-4) further enhances Treg function and is linked to autoimmune diseases like type 1 diabetes. Additionally, CTLA-4 plays a role in chronic lymphocytic leukemia (CLL) progression. Due to its immune-modulatory role, CTLA-4 is

targeted in cancer therapy. Ipilimumab, a monoclonal antibody that blocks CTLA-4, is approved for melanoma and is being explored for other cancers.

## PRODUCT DATA

---



Human CTLA4 Protein (C-Fc) on SDS-PAGE under reducing condition (P+) and non-reducing condition (P-). The gel was stained for 1 hour with BlinkBlue (catalog 700102). The purity of this protein appears to be greater than 95%.

This product is supplied subject to the terms and conditions at [www.innocyto.com/web/terms.php](http://www.innocyto.com/web/terms.php) and may only be used as provided in the stated terms. Products are for Research Use Only.