

Technical Data Sheet

iF560 Anti-Human CD127

Catalog Number: 104905, 104906
Size: 25 tests, 100 tests
Target Name: CD127, IL-7 receptor γ chain, IL-7R γ
Regulatory Status: RUO

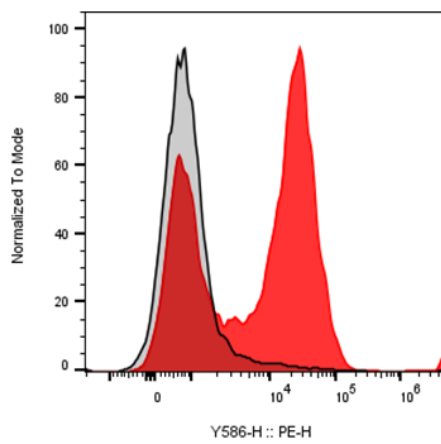
Product Details

Clone: 127AM1
Application: FC
Reactivity: Human
Format: iF560
Isotype: Mouse IgG1
Antibody Type: Monoclonal
Formulation: Phosphate-buffered solution, pH 7.2, containing 0.09% sodium azide and 0.2% (w/v) BSA
Protein Concentration: Supplied at a lot-specific concentration.
Storage&Handling: The antibody solution should be stored undiluted between 2°C and 8°C, and protected from prolonged exposure to light. Do not freeze.
Recommended Usage: For flow cytometric staining, it is recommended to use 5 μ L of this reagent per 0.5-1.0 million cells in a 100 μ L volume. Optimal reagent performance should be determined by titration for each specific application.
Excitation Laser: Green/Yellow laser (532/561nm)
Release Date: Aug-25

Background Information

The interleukin-7 receptor is a protein found on the surface of cells. It is made up of two different smaller protein chains - i.e. it is a heterodimer, and consists of two subunits, interleukin-7 receptor- γ (CD127) and common- γ chain receptor (CD132). The common- γ chain receptors is shared with various cytokines, including interleukin-2, -4, -9, and -15. Interleukin-7 receptor is expressed on various cell types, including naive and memory T cells and many others. Interleukin-7 receptor has been shown to play a critical role in the development of immune cells called lymphocytes.

Product Data



Human peripheral blood lymphocytes was stained with iF560 Anti-Human CD127 clone 127AM1 (color-filled histogram) or an isotype control (gray histogram) .