

Cynomolgus CD25 (IL-2R α) Protein (C-His)

Catalog Number:	812001, 812002
Size:	25 ug, 100 ug
Target Name:	IL2RA, CD25, p55, IL2-RA, IL-2-RA
Regulatory Status:	RUO

PRODUCT DETAILS

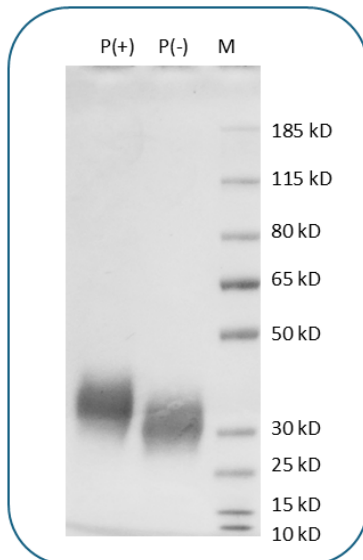
Application:	ELISA, BLI
Format:	Liquid, Purified
Expression Host:	CHO
Species:	Cynomolgus monkey
Sources:	Recombinant Cynomolgus CD25 (Glu22-Arg213) with C-terminus His-tag is expressed in CHO cell.
Accession Number:	P63309
Molecular Weight:	The protein has a predicted molecular weight of 23.5 kDa. Under DTT-reducing conditions, it migrates at approximately 35 kDa on SDS-PAGE.
Affinity Tag:	C-His
Purity:	>95% based on SDS-PAGE under reducing condition
Formulation:	1xPBS buffer, pH7.4, 0.22 μ m filtered
Endotoxin level:	Not tested
Protein Concentration:	25 μ g size is bottled at 0.2mg/mL concentration. 100 μ g size is supplied at a lot-specific concentration.
Storage and Handling:	Briefly centrifuge the vial upon receipt. An unopened vial can be stored at 4°C for up to 2 weeks, or at -20°C or below for up to six months. The protein may be further diluted to 0.1 mg/mL using 0.22 μ m-filtered PBS buffer (pH 7.4). For long-term storage, the diluted stock solution should be aliquoted and stored at \leq -70°C to minimize freeze-thaw cycles. If additional dilution is required, carrier proteins such as FBS or BSA should be added to maintain protein stability.

BACKGROUND INFORMATION

CD25, or IL-2 receptor alpha chain (IL2RA), is a type I transmembrane glycoprotein expressed on activated T cells and regulatory T cells. It binds IL-2 with low affinity on its own but forms a high-affinity receptor complex with the IL-2 receptor beta and gamma chains, triggering intracellular signaling pathways like MAPK and JAK/STAT. While CD25 is considered an activation marker on dendritic cells, they do not express the beta-chain necessary for IL-2 signaling. CD25 is involved in immune responses and is linked to autoimmune diseases like type 1 diabetes (T1D). Additionally, elevated soluble IL-2 receptor alpha (sIL-2R α) levels are found in hematological malignancies, such as leukemias and lymphomas, as well as solid tumors, including melanoma and carcinomas of

the kidney, head and neck, esophagus, and lung, reflecting tumor burden and activity.

PRODUCT DATA



Cynomolgus CD25 (C-His) on SDS-PAGE under reducing condition (P+) and non-reducing condition (P-). The gel was stained for 1 hour with BlinkBlue (catalog 700102). The purity of this protein appears to be greater than 95%.

This product is supplied subject to the terms and conditions at www.innocyto.com/web/terms.php and may only be used as provided in the stated terms. Products are for Research Use Only.