

Rhesus PD-L1 (CD274) Protein (C-His)

Catalog Number:	812401, 812402
Size:	25 ug, 100 ug
Target Name:	PD-L1, CD274, B7-H1, PDCD1L1, PDCD1LG1
Regulatory Status:	RUO

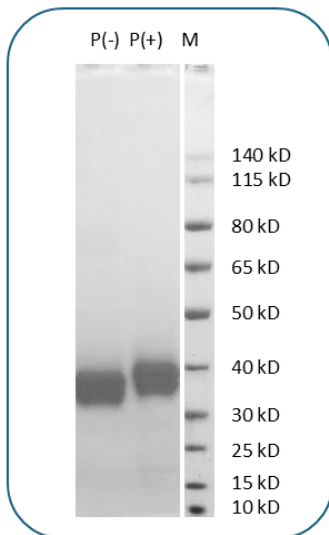
PRODUCT DETAILS

Application:	ELISA, BLI
Format:	Liquid, Purified
Expression Host:	CHO
Species:	Rhesus monkey
Sources:	Recombinant Rhesus PD-L1 (Phe19-Arg238) with C-terminus His-tag is expressed in CHO cell.
Accession Number:	F6VEW6
Molecular Weight:	The protein has a predicted molecular weight of 26.8 kDa. Under DTT-reducing conditions, it migrates at approximately 30 kDa on SDS-PAGE.
Affinity Tag:	C-His
Purity:	>95% based on SDS-PAGE under reducing condition
Formulation:	1xPBS buffer, pH7.4, 0.22 µm filtered
Endotoxin level:	Not tested
Protein Concentration:	25µg size is bottled at 0.2mg/mL concentration. 100 µg size is supplied at a lot-specific concentration.
Storage and Handling:	Briefly centrifuge the vial upon receipt. An unopened vial can be stored at 4°C for up to 2 weeks, or at -20°C or below for up to six months. The protein may be further diluted to 0.1 mg/mL using 0.22 µm-filtered PBS buffer (pH 7.4). For long-term storage, the diluted stock solution should be aliquoted and stored at ≤ -70°C to minimize freeze-thaw cycles. If additional dilution is required, carrier proteins such as FBS or BSA should be added to maintain protein stability.

BACKGROUND INFORMATION

Programmed death-1 ligand-1 (PD-L1, CD274, B7-H1) is an immune regulatory protein that interacts with the PD-1 receptor, playing a critical role in controlling immune responses and maintaining peripheral tolerance. Part of the B7 family, PD-L1 contains one V-like and one C-like Ig domain in its extracellular region. By binding to PD-1 on activated T-cells and B-cells, PD-L1 inhibits T-cell activation, promoting apoptosis and cell-cycle arrest, which can suppress ongoing immune responses. This mechanism is implicated in immune evasion by tumors, as PD-L1 helps tumors escape detection by inducing apoptosis in antigen-specific T-cells, contributing to tumor growth. Due to its pivotal role in immune regulation, PD-L1 has emerged as a promising therapeutic target for treating autoimmune diseases and malignancies.

PRODUCT DATA



Rhesus PD-L1 (C-His) Protein on SDS-PAGE under non-reducing and reducing conditions. The gel was stained for 1 hour with BlinkBlue Protein Staining Buffer (Catalog 700102). The purity of this protein appears to be greater than 95%.

This product is supplied subject to the terms and conditions at www.innocyto.com/web/terms.php and may only be used as provided in the stated terms. Products are for Research Use Only.