

## Biotin Human CD25 (IL-2R) Protein (C-Fc-Avi)

<b>Catalog Number:</b>	812803, 812804
<b>Size:</b>	25 ug, 100 ug
<b>Target Name:</b>	IL2RA, CD25, p55
<b>Regulatory Status:</b>	RUO

### PRODUCT DETAILS

---

<b>Application:</b>	ELISA, BLI
<b>Format:</b>	Liquid, Biotinylated
<b>Expression Host:</b>	CHO
<b>Species:</b>	Human
<b>Sources:</b>	Recombinant Human CD25 (Glu22-Cys213) with C-terminus Fc-Avi-tag is expressed in CHO cell. This protein was site-specifically labeled with Biotin by BirA ligase.
<b>Accession Number:</b>	P01589
<b>Molecular Weight:</b>	The protein has a predicted molecular weight of 50.2 kDa. Under DTT-reducing conditions, it migrates at approximately 65 kDa on SDS-PAGE.
<b>Affinity Tag:</b>	C-Fc-Avi
<b>Purity:</b>	>95% based on SDS-PAGE under reducing condition
<b>Formulation:</b>	1xPBS buffer, pH7.4, 0.22 µm filtered
<b>Endotoxin level:</b>	Not tested
<b>Protein Concentration:</b>	25µg size is bottled at 0.2mg/mL concentration. 100 µg size is supplied at a lot-specific concentration.
<b>Storage and Handling:</b>	Briefly centrifuge the vial upon receipt. An unopened vial can be stored at 4°C for up to 2 weeks, or at -20°C or below for up to six months. The protein may be further diluted to 0.1 mg/mL using 0.22 µm-filtered PBS buffer (pH 7.4). For long-term storage, the diluted stock solution should be aliquoted and stored at ≤ -70°C to minimize freeze-thaw cycles. If additional dilution is required, carrier proteins such as FBS or BSA should be added to maintain protein stability.

### BACKGROUND INFORMATION

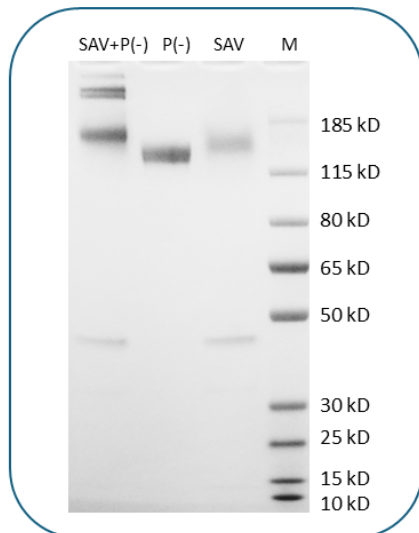
---

CD25 (IL2RA), a type I transmembrane glycoprotein, is expressed on activated T cells, regulatory T cells, and dendritic cells. It binds IL-2 with low affinity on its own, but upon associating with the IL-2 receptor beta (CD122) and common gamma chain (CD132), it forms a high-affinity complex that triggers intracellular signaling pathways like MAPK and JAK/STAT. CD25 is involved in immune regulation and plays a role in autoimmune diseases, including type 1 diabetes. Soluble CD25 (sIL-2Ralpha) is released during immune responses and is a marker for tumor burden in hematological malignancies, including leukemias and lymphomas, as well as some solid tumors like melanoma and carcinomas. The presence of sIL-2Ralpha in circulation reflects tumor activity and is

associated with immune modulation in cancer progression.

## PRODUCT DATA

---



Human CD25 Protein (C-Fc-Avi) was biotinylated in vitro using BirA ligase. SDS-PAGE analysis under reducing (P-) conditions shows the protein has a purity greater than 95%. A gel shift assay using co-incubation with streptavidin indicates that the biotinylation efficiency of the CD25 protein exceeds 90%.

This product is supplied subject to the terms and conditions at [www.innocyto.com/web/terms.php](http://www.innocyto.com/web/terms.php) and may only be used as provided in the stated terms. Products are for Research Use Only.