

Human PD-L2 (CD273) Protein (C-His)

Catalog Number:	813201, 813202
Size:	25 ug, 100 ug
Target Name:	PDL2, , Butyrophilin B7-DC, CD273, PDCD1 ligand 2
Regulatory Status:	RUO

PRODUCT DETAILS

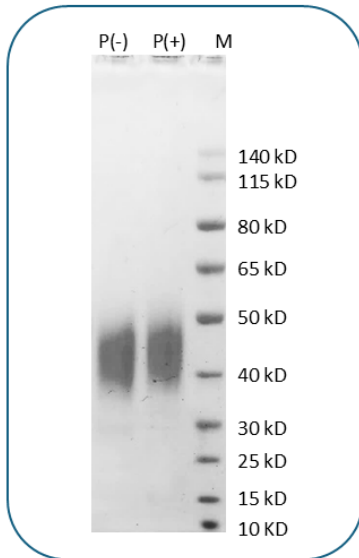
Application:	ELISA, BLI
Format:	Liquid, Purified
Expression Host:	CHO
Species:	Human
Sources:	Recombinant Human PD-L2 (Leu20-Pro219) with C-terminus His-tag is expressed in CHO cell.
Accession Number:	Q9BQ51
Molecular Weight:	The protein has a predicted molecular weight of 24.2 kDa. Under DTT-reducing conditions, it migrates at approximately 35 kDa on SDS-PAGE.
Affinity Tag:	C-His
Purity:	>95% based on SDS-PAGE under reducing condition
Formulation:	1xPBS buffer, pH7.4, 0.22 µm filtered
Endotoxin level:	Not tested
Protein Concentration:	25µg size is bottled at 0.2mg/mL concentration. 100 µg size is supplied at a lot-specific concentration.
Storage and Handling:	Briefly centrifuge the vial upon receipt. An unopened vial can be stored at 4°C for up to 2 weeks, or at -20°C or below for up to six months. The protein may be further diluted to 0.1 mg/mL using 0.22 µm-filtered PBS buffer (pH 7.4). For long-term storage, the diluted stock solution should be aliquoted and stored at ≤ -70°C to minimize freeze-thaw cycles. If additional dilution is required, carrier proteins such as FBS or BSA should be added to maintain protein stability.

BACKGROUND INFORMATION

Programmed death ligand 2 (PD-L2, also known as B7-DC or CD273) is a type I transmembrane protein and a member of the B7 family, containing one V-like and one C-like Ig domain in its extracellular region. It is mainly expressed on antigen-presenting cells, such as dendritic cells, macrophages, and B cells, and its expression can be induced by IFN-γ or LPS. PD-L2 serves as a high-affinity ligand for PD-1, a receptor expressed on activated T and B cells, and inhibits T cell activation, proliferation, and cytokine production, thus contributing to immune tolerance and evasion, particularly in tumors and autoimmunity. PD-L2 also plays a PD-1-independent role in asthma by regulating airway hyperresponsiveness through IL-12 production and binding to an alternative receptor, RGMb, involved in respiratory immune regulation. Its dual functions in both PD-1-dependent and independent pathways highlight PD-L2 as

a critical immunoregulatory molecule and a potential therapeutic target in cancer, autoimmunity, and allergic diseases.

PRODUCT DATA



Human PD-L2 (C-His) on SDS-PAGE under reducing condition (P+) and non-reducing condition (P-). The gel was stained for 1 hour with BlinkBlue (catalog 700102). The purity of this protein appears to be greater than 95%.

This product is supplied subject to the terms and conditions at www.innocyto.com/web/terms.php and may only be used as provided in the stated terms. Products are for Research Use Only.