

Human SUMF1 Protein (N-His)

Catalog Number:	601701, 601702
Size:	25 ug, 100 ug
Target Name:	SUMF1, Formylglycine-generating enzyme
Regulatory Status:	RUO

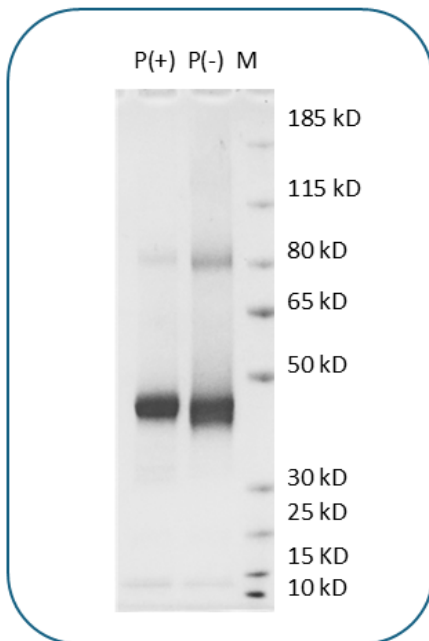
PRODUCT DETAILS

Application:	ELISA, BLI
Format:	Liquid, Purified
Expression Host:	CHO
Species:	Human
Accession Number:	Q8NBK3
Sources:	Recombinant human SUMF1 protein (Ser34-Asp374) with N-terminus His tag was expressed in CHO Cells.
Molecular Weight:	This protein has a predicted molecular weight of 39.6 kDa. Under DTT-reducing conditions, the protein migrates at approximately 45 kDa on SDS-PAGE.
Affinity Tag:	N-His
Purity:	>90% based on SDS-PAGE under reducing condition
Formulation:	25 mM HEPES, 150 mM NaCl, 10% Glycerol, pH 7.4
Endotoxin level:	Not tested
Protein Concentration:	25µg size is bottled at 0.2mg/mL concentration. 100 µg size is supplied at a lot-specific concentration.
Storage and Handling:	Briefly centrifuge the vial upon receipt. An unopened vial can be stored at 4°C for up to 2 weeks, or at -20°C or below for up to six months. The protein may be further diluted to 0.1 mg/mL using 0.22 µm-filtered HEPES buffer (pH 7.4). For long-term storage, the diluted stock solution should be aliquoted and stored at ≤ -70°C to minimize freeze-thaw cycles. If additional dilution is required, carrier proteins such as FBS or BSA should be added to maintain protein stability.

BACKGROUND INFORMATION

Human SUMF1 (also known as formylglycine-generating enzyme, FGE) is a 42 kDa soluble glycoprotein located in the endoplasmic reticulum (ER) lumen. It activates sulfatases by converting a cysteine residue in their catalytic site into a formylglycine, a modification essential for sulfatase function. SUMF1 can form monomers, disulfide-linked homodimers, or heterodimers with SUMF2. It is a Ca²⁺-binding protein and exists in three splice isoforms. Mature human SUMF1 shares 90% amino acid identity with its mouse counterpart.

PRODUCT DATA



Purified Human SUMF1 final product on SDS-PAGE under reducing (P+) and non-reducing (P-) conditions. The purity of Human SUMF1 appears to be greater than 90% based on reducing condition. The bands above 80 kDa in non-reducing is a dimer. This band is significantly reduced in reducing conditions. The band below 15 kDa is likely a truncated N-terminus fragment.

This product is supplied subject to the terms and conditions at www.innocyto.com/web/terms.php and may only be used as provided in the stated terms. Products are for Research Use Only.