

iF647 Anti-Human TCR Vb13.1 Antibody

Catalog Number:	106305, 106306
Size:	25 tests, 100 tests
Target Name:	TCR Vb13.1, T cell receptor Vβ13.1 chain, TCRBV13.1, TCRBV13
Regulatory Status:	RUO

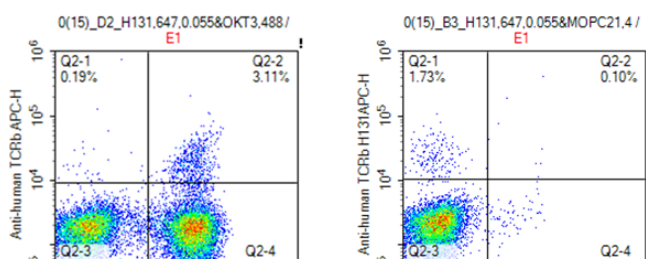
PRODUCT DETAILS

Clone:	H131
Application:	Flow Cytometry
Reactivity:	Human
Format:	iF647
Isotype:	Mouse IgG2b
Antibody Type:	Monoclonal
Formulation:	Phosphate-buffered solution, pH 7.2, containing 0.09% sodium azide and 0.2% (w/v) BSA
Protein Concentration:	Supplied at a lot-specific concentration.
Storage and Handling:	The antibody solution should be stored undiluted between 2°C and 8°C, and protected from prolonged exposure to light. Do not freeze.
Recommended Usage:	For flow cytometric staining, it is recommended to use 5 µL of this reagent per 0.5-1.0 million cells in a 100 µL volume. Optimal reagent performance should be determined by titration for each specific application. iF647 has an excitation max at 656 nm and an emission max at 670 nm.
Excitation Laser:	Red Laser (633 nm)
Isotype Control:	301607

BACKGROUND INFORMATION

TCR Vβ13.1 is a variant of the TCR β chain. The receptor is complexed with the TCR α chain and belongs to the immunoglobulin superfamily. It is expressed on a subset of T cells and some T cell clones. Variability in the β chain is generated by Vβ, Dβ, and Jβ gene rearrangement, while variability in the α chain is generated by Vα and Jα rearrangement. TCR Vβ13.1 has been shown to be related to antigen recognition and inflammation as well as diseases, such as HIV and multiple sclerosis.

PRODUCT DATA



Human peripheral blood lymphocytes stained with iF647

Anti-Human TCR Vb13.1 clone H131 and CD3 iF488 (FITC) or an isotype control.

This product is supplied subject to the terms and conditions at www.innocyto.com/web/terms.php and may only be used as provided in the stated terms. Products are for Research Use Only.