

Anti-Human CD45 Antibody

Catalog Number:	106501, 106502
Size:	100 ug, 500 ug
Target Name:	CD45, LCA, T200
Regulatory Status:	RUO

PRODUCT DETAILS

Clone:	HI30
Application:	Flow Cytometry
Reactivity:	Human
Format:	Purified
Isotype:	Mouse IgG1
Antibody Type:	Monoclonal
Formulation:	Phosphate-buffered solution, pH 7.2, containing 0.09% sodium azide
Protein Concentration:	0.5 mg/mL
Storage and Handling:	The antibody solution should be stored between 2°C and 8°C
Recommended Usage:	For flow cytometric staining, it is recommended to use less than 0.25 µg of this reagent per 0.5-1.0 million cells in a 100 µL volume. Optimal reagent performance should be determined by titration for each specific application
Isotype Control:	301401

BACKGROUND INFORMATION

CD45, also known as protein tyrosine phosphatase receptor type C (PTPRC), is a transmembrane protein tyrosine phosphatase that plays an essential role in regulating signaling thresholds in hematopoietic cells. It is expressed on nearly all nucleated cells of hematopoietic origin, including T cells, B cells, natural killer cells, dendritic cells, and most myeloid cells, making it a defining pan-leukocyte marker. CD45 is critical for proper immune cell development, activation, and homeostasis.

Structurally, CD45 is a type I transmembrane glycoprotein composed of a large extracellular domain, a single transmembrane region, and a cytoplasmic tail containing two phosphatase domains. The membrane-proximal phosphatase domain is catalytically active, while the distal domain has regulatory functions. Extensive alternative splicing of exons encoding the extracellular domain generates multiple CD45 isoforms, including CD45RA, CD45RB, and CD45RO, which differ in size and expression patterns and are commonly used to distinguish naïve, activated, and memory lymphocyte subsets.

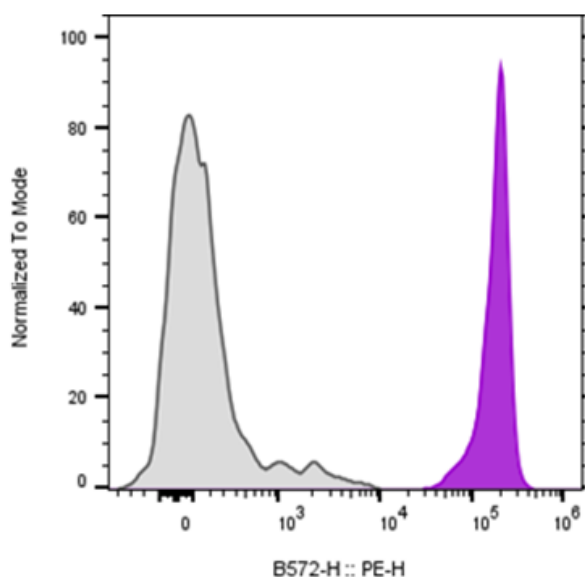
Unlike many immune receptors, CD45 does not have a well-defined classical ligand. Instead, its function is primarily enzymatic and regulatory, modulating signaling from antigen receptors and cytokine receptors. CD45 dephosphorylates inhibitory tyrosine residues on Src family kinases such as Lck and Fyn in T cells and Lyn in B cells, thereby enabling effective signaling through the T cell receptor (TCR) and B cell receptor (BCR). Through this activity, CD45 sets activation thresholds and ensures appropriate

immune responsiveness.

CD45 is implicated in several diseases when its expression or function is altered. Genetic deficiencies in CD45 lead to severe combined immunodeficiency (SCID), characterized by profound defects in T and B cell development and function. Aberrant CD45 signaling has also been associated with autoimmune diseases, where altered activation thresholds may contribute to self-reactivity. In hematologic malignancies, CD45 expression patterns are widely used for diagnostic immunophenotyping and can influence sensitivity to radiation and chemotherapy.

Therapeutically, CD45 is primarily leveraged as a biomarker and targeting antigen rather than a signaling target. Anti-CD45 antibodies have been explored for conditioning regimens in bone marrow transplantation and for targeted delivery of radioisotopes in hematologic cancers. In research and clinical diagnostics, CD45 remains indispensable for identifying leukocytes and characterizing immune cell subsets, underscoring its central role in immunology and translational medicine.

PRODUCT DATA



Human peripheral blood lymphocytes stained either with purified Anti-Human CD45 clone HI30 (purple histogram) or an isotype control (gray histogram), followed by PE anti-mouse IgG 2nd antibody.

This product is supplied subject to the terms and conditions at www.innocyto.com/web/terms.php and may only be used as provided in the stated terms. Products are for Research Use Only.