

## Technical Data Sheet

### Anti-Human EGFR

**Catalog Number:** 100101, 100102

**Size:** 100 ug, 500 ug

**Target Name:** EGFR, Proto-oncogene c-ErbB-1, Receptor tyrosine-protein kinase erbB-1, HER1

**Regulatory Status:** RUO

#### Product Details

---

**Clone:** 528

**Application:** FC

**Reactivity:** Human

**Format:** Purified

**Isotype:** Mouse IgG2a

**Antibody Type:** Monoclonal

**Formulation:** Phosphate-buffered solution, pH 7.2, containing 0.09% sodium azide

**Protein Concentration:** 0.5 mg/mL

**Storage and Handling:** The antibody solution should be stored between 2°C and 8°C

**Recommended Usage:** For flow cytometric staining, it is recommended to use less than 0.2 ug of this reagent per 0.5-1.0 million cells in a 100 µL volume. Optimal reagent performance should be determined by titration for each specific application

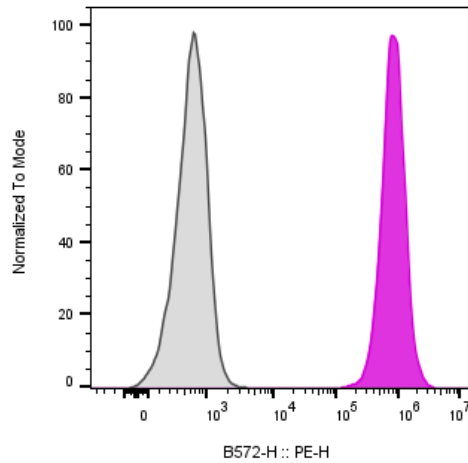
#### Background Information

---

Epidermal growth factor receptor (EGFR) is a transmembrane glycoprotein and member of the protein kinase superfamily that regulates cell growth and differentiation. EGFR binds EGF, TGF-?, amphiregulin, betacellulin, heparin-binding EGF-like growth factor, GP30, and vaccinia virus growth factor - all members of the EGF family.

#### Product Data

---



A-431 cells stained either purified Anti-Human EGFR clone 528 (color-filled histogram) or an isotype control (gray histogram), followed by PE conjugated secondary anti-mouse.