

Technical Data Sheet

iF488 Anti-Mouse Ly-6A/E (Sca-1)

Catalog Number: 200605, 200606

Size: 25 tests, 100 tests

Target Name: Ly-6A/E, Sca-1

Regulatory Status: RUO

Product Details

Clone: D7

Application: FC

Reactivity: Mouse

Format: iF488

Isotype: Rat IgG2a

Antibody Type: Monoclonal

Formulation: Phosphate-buffered solution, pH 7.2, containing 0.09% sodium azide and 0.2% (w/v) BSA

Protein Concentration: Supplied at a lot-specific concentration.

Storage&Handling: The antibody solution should be stored undiluted between 2°C and 8°C, and protected from prolonged exposure to light. Do not freeze.

Recommended Usage: For flow cytometric staining, it is recommended to use 5 µL of this reagent per 0.5-1.0 million cells in a 100 µL volume. Optimal reagent performance should be determined by titration for each specific application.

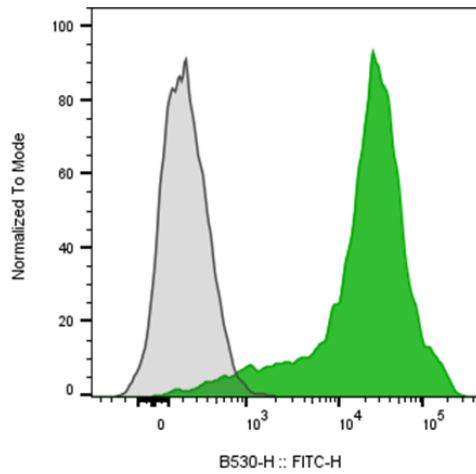
Excitation Laser: Blue Laser (488 nm)

Release Date: Sep-25

Background Information

Stem Cell Antigen-1 (Sca-1), also known as Ly-6A/E, is an 18 kDa GPI-anchored glycoprotein and a member of the Ly-6 multigene family. It is widely used as a marker for murine hematopoietic stem cells and various progenitor cell populations

Product Data



Mouse splenocytes were stained with either iF488 Anti-Mouse Ly-6A/E clone D7 (color-filled histogram) or an isotype control (gray histogram).