

Anti-Mouse TCR β chain Antibody

Catalog Number:	201701, 201702
Size:	100 ug, 500 ug
Target Name:	TCR β chain, TCR- β
Regulatory Status:	RUO

PRODUCT DETAILS

Clone:	H57-597-R1
Application:	Flow Cytometry
Reactivity:	Mouse
Format:	Purified
Isotype:	Rat IgG1
Antibody Type:	Monoclonal
Formulation:	Phosphate-buffered solution, pH 7.2, containing 0.09% sodium azide
Protein Concentration:	0.5 mg/mL
Storage&Handling:	Store the antibody undiluted at 2°C to 8°C.
Recommended Usage:	For flow cytometric staining, it is recommended to use less than 0.2 μ g of this reagent per 0.5-1.0 million cells in a 100 μ L volume. Optimal reagent performance should be determined by titration for each specific application.
Isotype Control:	301501

BACKGROUND INFORMATION

The mouse T cell receptor (TCR) β chain is a critical component of the heterodimeric $\alpha\beta$ TCR complex expressed on most mature T lymphocytes. Together with the TCR α chain, it confers antigen specificity to T cells, enabling the recognition of peptide fragments presented by major histocompatibility complex (MHC) molecules on antigen-presenting cells. This recognition event is essential for initiating adaptive immune responses, including T cell activation, proliferation, and differentiation into effector and memory subsets.

Structurally, the TCR β chain is composed of variable (V), diversity (D), joining (J), and constant (C) gene segments that undergo somatic recombination during T cell development in the thymus. This recombination process generates the highly variable complementarity-determining region 3 (CDR3), which contributes most significantly to antigen specificity. The β chain pairs non-covalently with the TCR α chain, forming the antigen-binding site. Each chain contains two extracellular immunoglobulin-like domains, a variable domain involved in antigen binding and a constant domain that stabilizes structure, along with a transmembrane segment and a short cytoplasmic tail. The TCR complex also associates with CD3 signaling molecules (CD3 γ , CD3 δ , CD3 ϵ , and CD3 ζ), which transduce activation signals through immunoreceptor tyrosine-based activation motifs (ITAMs).

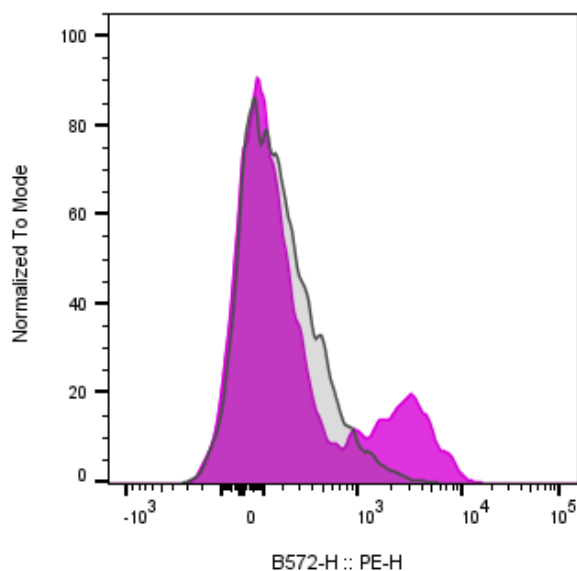
The ligands for the mouse TCR β chain are peptide antigens bound to MHC class I or II molecules. Engagement of the $\alpha\beta$ TCR with

these peptide-MHC complexes triggers receptor conformational changes that initiate intracellular signaling cascades involving kinases such as Lck and ZAP-70, leading to T cell activation and effector function.

In disease, alterations in TCR β chain expression or repertoire diversity can contribute to immune dysfunction. Restricted TCR β repertoires are associated with autoimmune diseases, such as experimental autoimmune encephalomyelitis (EAE, a model for multiple sclerosis), and with impaired immune defense in infections or cancer. Somatic mutations or skewed TCR β usage have also been observed in T cell lymphomas and leukemia.

The mouse TCR β chain has significant therapeutic and experimental relevance. It serves as a model for studying clonal selection, antigen recognition, and tolerance mechanisms. In immunotherapy, manipulation of TCR β sequence diversity underpins TCR-engineered T cell strategies for cancer and infection control. Furthermore, analyzing mouse TCR β repertoires provides insights into vaccine efficacy, autoimmune mechanisms, and immune reconstitution following bone marrow transplantation.

PRODUCT DATA



Mouse splenocytes stained with either Anti-Mouse TCR β chain clone H57-597-R1 (color-filled histogram) or an isotype control (gray histogram), followed by PE conjugated anti-Rat IgG.

This product is supplied subject to the terms and conditions at www.innocyto.com/web/terms.php and may only be used as provided in the stated terms. Products are for Research Use Only.