

Anti-Human CD11b (Integrin α M) Antibody

Catalog Number:	100501, 100502
Size:	100 ug, 500 ug
Target Name:	CD11b, Integrin α M chain, C3biR, CR3, Mac-1, Mo1, ITGAM
Regulatory Status:	RUO

PRODUCT DETAILS

Clone:	011bAM1
Application:	Flow Cytometry
Reactivity:	Human
Format:	Purified
Isotype:	Mouse IgG1
Antibody Type:	Monoclonal
Formulation:	Phosphate-buffered solution, pH 7.2, containing 0.09% sodium azide
Protein Concentration:	0.5 mg/mL
Storage&Handling:	The antibody solution should be stored between 2°C and 8°C
Recommended Usage:	For flow cytometric staining, it is recommended to use less than 0.2 μ g of this reagent per 0.5-1.0 million cells in a 100 μ L volume. Optimal reagent performance should be determined by titration for each specific application
Isotype Control:	301401

BACKGROUND INFORMATION

CD11b, also known as integrin α M or ITGAM, is a cell surface adhesion and signaling molecule that plays a central role in innate immune responses. It is predominantly expressed on myeloid lineage cells, including neutrophils, monocytes, macrophages, dendritic cells, and certain subsets of natural killer (NK) cells. CD11b pairs non-covalently with the β 2 integrin subunit CD18 (integrin β 2) to form the heterodimeric receptor Mac-1, also referred to as complement receptor 3 (CR3).

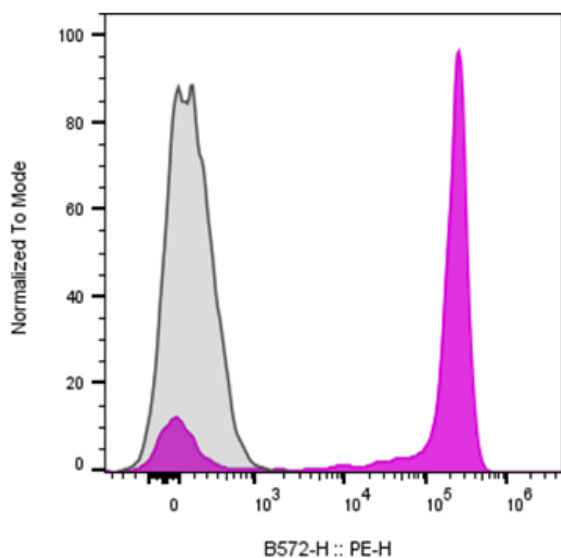
Structurally, CD11b is a type I transmembrane glycoprotein with a large extracellular domain, a single transmembrane region, and a short cytoplasmic tail. A defining feature of CD11b is the inserted (I) domain within its extracellular region, which is critical for ligand binding. Conformational changes in the CD11b/CD18 complex regulate its affinity for ligands, allowing dynamic control of cell adhesion, migration, and signaling in response to inflammatory cues. Functionally, CD11b mediates multiple immune processes, including leukocyte adhesion to the endothelium, migration into inflamed tissues, phagocytosis, and immune regulation. As complement receptor 3, CD11b binds the complement fragment iC3b deposited on opsonized pathogens or apoptotic cells, facilitating their phagocytic clearance. CD11b also participates in outside-in signaling that modulates cytokine production, respiratory burst activity, and cell survival, thereby shaping innate immune responses. CD11b interacts with a diverse range of ligands. In addition to iC3b, its ligands include intercellular adhesion molecule-1 (ICAM-1), fibrinogen, heparin, and various microbial components. Through these interactions, CD11b enables firm adhesion of leukocytes to vascular endothelium and promotes

transmigration during inflammation, as well as pathogen recognition and clearance.

Altered CD11b function has been implicated in numerous diseases. Excessive or sustained CD11b-mediated activation contributes to chronic inflammatory and autoimmune conditions, such as systemic lupus erythematosus and rheumatoid arthritis. Genetic variants in ITGAM have been associated with increased susceptibility to autoimmune disease. In cancer, CD11b is commonly expressed on myeloid-derived suppressor cells (MDSCs) and tumor-associated macrophages, where it contributes to immunosuppressive tumor microenvironments and tumor progression.

Therapeutically, CD11b serves both as a biomarker and a potential target. It is widely used to identify and characterize myeloid cell populations in research and clinical settings. Emerging therapeutic strategies aim to modulate CD11b activity to reduce pathological inflammation or to reprogram suppressive myeloid cells in cancer, highlighting CD11b as an important interface between innate immunity and disease intervention.

PRODUCT DATA



Human granulocytes were stained either with purified Anti-Human CD11b clone 011bAM1 (color-filled histogram) or an isotype control (gray histogram), followed by PE anti-mouse IgG.

This product is supplied subject to the terms and conditions at www.innocyto.com/web/terms.php and may only be used as provided in the stated terms. Products are for Research Use Only.