

## Technical Data Sheet

### iF647 Anti-Human EGFR

**Catalog Number:** 100107, 100108

**Size:** 25 tests, 100 tests

**Target Name:** EGFR, Proto-oncogene c-ErbB-1, Receptor tyrosine-protein kinase erbB-1, HER1

**Regulatory Status:** RUO

#### Product Details

---

**Clone:** 528

**Application:** FC

**Reactivity:** Human

**Format:** iF647

**Isotype:** Mouse IgG2a

**Antibody Type:** Monoclonal

**Formulation:** Phosphate-buffered solution, pH 7.2, containing 0.09% sodium azide and 0.2% (w/v) BSA

**Protein Concentration:** Supplied at a lot-specific concentration.

**Storage&Handling:** The antibody solution should be stored undiluted between 2°C and 8°C, and protected from prolonged exposure to light. Do not freeze.

**Recommended Usage:** For flow cytometric staining, it is recommended to use 5 µL of this reagent per 0.5-1.0 million cells in a 100 µL volume. Optimal reagent performance should be determined by titration for each specific application.

**Excitation Laser:** Red Laser (633 nm)

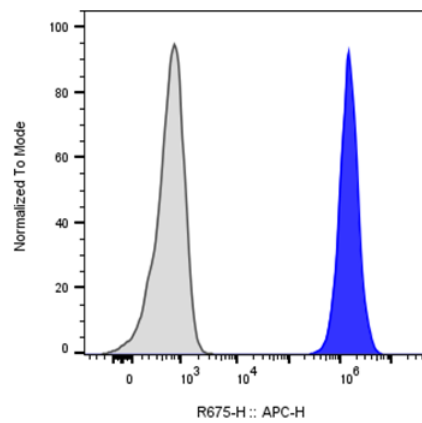
#### Background Information

---

Epidermal growth factor receptor (EGFR) is a transmembrane glycoprotein and member of the protein kinase superfamily that regulates cell growth and differentiation. EGFR binds EGF, TGF-?, amphiregulin, betacellulin, heparin-binding EGF-like growth factor, GP30, and vaccinia virus growth factor - all members of the EGF family.

#### Product Data

---



A-431 cells stained either iF647 Anti-Human EGFR clone 528 (color-filled histogram) or an isotype control (gray histogram).