

Technical Data Sheet

FITC Anti-Human CD64

Catalog Number: 109309, 109310
Size: 25 tests, 100 tests
Target Name: CD64, FCGR1A, FCG1, FCGR1, IGFR1
Regulatory Status: RUO

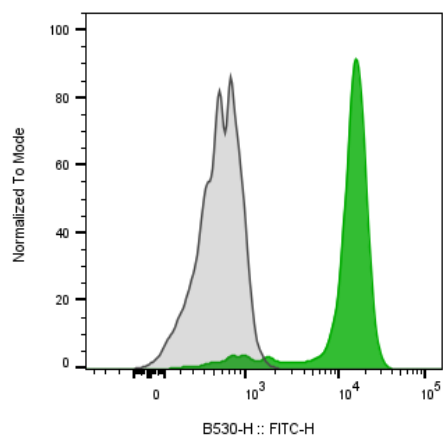
Product Details

Clone: H22
Application: FC
Reactivity: Human
Format: FITC
Isotype: Mouse IgG1
Antibody Type: Monoclonal
Formulation: Phosphate-buffered solution, pH 7.2, containing 0.09% sodium azide and 0.2% (w/v) BSA
Protein Concentration: Supplied at a lot-specific concentration.
Storage&Handling: The antibody solution should be stored undiluted between 2°C and 8°C, and protected from prolonged exposure to light. Do not freeze.
Recommended Usage: For flow cytometric staining, it is recommended to use 5 uL of this reagent per 0.5-1.0 million cells in a 100 µL volume. Optimal reagent performance should be determined by titration for each specific application.
Excitation Laser: Blue Laser (488 nm)

Background Information

CD64, also known as FcγRI or FcR I, is a 72 kDa type I glycoprotein and a member of the immunoglobulin superfamily. This high-affinity IgG Fc receptor is predominantly expressed on monocytes, macrophages, dendritic cells, and activated granulocytes. Its expression can be upregulated by IFN-γ stimulation, enhancing its role in immune responses. CD64 binds IgG immune complexes and is involved in several crucial immune functions, including antigen capture, phagocytosis of IgG/antigen complexes, and antibody-dependent cellular cytotoxicity (ADCC). By mediating these processes, CD64 contributes to the activation of innate immune responses and the clearance of immune complexes.

Product Data



Human peripheral blood monocytes stained either FITC Anti-Human CD64 clone H22 (color-filled histogram) or an isotype control (gray histogram).