

Technical Data Sheet

APC Anti-Human CD45

Catalog Number: 105413, 105414

Size: 25 tests, 100 tests

Target Name: CD45, Leukocyte Common Antigen (LCA), T200

Regulatory Status: RUO

Product Details

Clone: 2D1

Application: FC

Reactivity: Human

Format: APC

Isotype: Mouse IgG1

Antibody Type: Monoclonal

Formulation: Phosphate-buffered solution, pH 7.2, containing 0.09% sodium azide and 0.2% (w/v) BSA

Protein Concentration: Supplied at a lot-specific concentration.

Storage&Handling: The antibody solution should be stored undiluted between 2°C and 8°C, and protected from prolonged exposure to light. Do not freeze.

Recommended Usage: For flow cytometric staining, it is recommended to use 5 µL of this reagent per 0.5-1.0 million cells in a 100 µL volume. Optimal reagent performance should be determined by titration for each specific application.

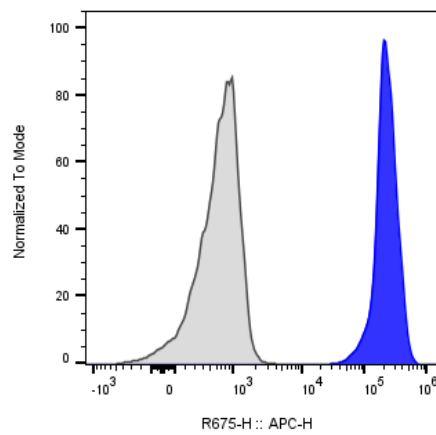
Excitation Laser: Red Laser (633 nm)

Release Date: Nov-25

Background Information

CD45 is a 180 - 240 kD single chain type I membrane glycoprotein also known as leukocyte common antigen (LCA) and T200. It is a tyrosine phosphatase expressed on the plasma membrane of all hematopoietic cells, except erythrocytes or platelets. CD45 is a signaling molecule that regulates a variety of cellular processes including cell growth, differentiation, cell cycle, and oncogenic transformation. CD45 plays a critical role in T and B cell antigen receptor-mediated activation by dephosphorylating substrates including p56Lck, p59Fyn, and other Src family kinases. CD45 non-covalently associates with lymphocyte phosphatase-associated phosphoprotein (LPAP) on T and B lymphocytes.

Product Data



Human peripheral blood lymphocytes stained either APC Anti-Human CD45 clone 2D1 (color-filled histogram) or an isotype control (gray histogram).