

## Technical Data Sheet

### APC Anti-Human CD16

**Catalog Number:** 105909, 105910

**Size:** 25 tests, 100 tests

**Target Name:** CD16, Fc $\gamma$ RIII

**Regulatory Status:** RUO

#### Product Details

---

**Clone:** 3G8

**Application:** FC

**Reactivity:** Human

**Format:** APC

**Isotype:** Mouse IgG1

**Antibody Type:** Monoclonal

**Formulation:** Phosphate-buffered solution, pH 7.2, containing 0.09% sodium azide and 0.2% (w/v) BSA

**Protein Concentration:** Supplied at a lot-specific concentration.

**Storage&Handling:** The antibody solution should be stored undiluted between 2°C and 8°C, and protected from prolonged exposure to light. Do not freeze.

**Recommended Usage:** For flow cytometric staining, it is recommended to use 5  $\mu$ L of this reagent per 0.5-1.0 million cells in a 100  $\mu$ L volume. Optimal reagent performance should be determined by titration for each specific application.

**Excitation Laser:** Red Laser (633 nm)

**Release Date:** Nov-25

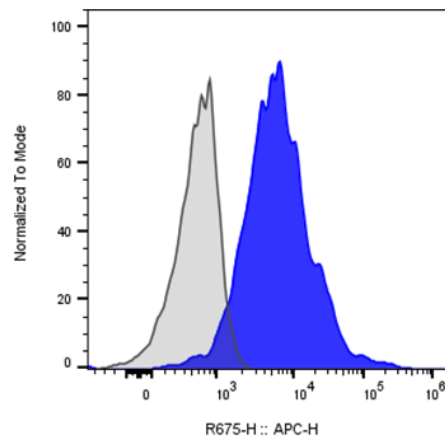
#### Background Information

---

CD16 is the type III Fc $\gamma$  receptor. In humans, it exists in two different forms: Fc $\gamma$ RIIIa (CD16a) and Fc $\gamma$ RIIIb (CD16b). CD16, also known as Fc $\gamma$ RIII, is a cluster of differentiation molecule found on the surface of natural killer cells, neutrophils, monocytes, macrophages, and certain T cells. CD16 has been identified as Fc receptors Fc $\gamma$ RIIIa (CD16a) and Fc $\gamma$ RIIIb (CD16b), which participate in signal transduction. It is expressed specifically on neutrophils. CD16 is often used as an additional marker to reliably identify different subsets of human immune cells.

#### Product Data

---



Human peripheral blood monocytes stained either APC Anti-Human CD16 clone 3G8 (color-filled histogram) or an isotype control (gray histogram).