

FITC Anti-Mouse CD45.2 Antibody

Catalog Number:	202305, 202306
Size:	25 tests, 100 tests
Target Name:	CD45.2, Ly-5.2, LCA
Regulatory Status:	RUO

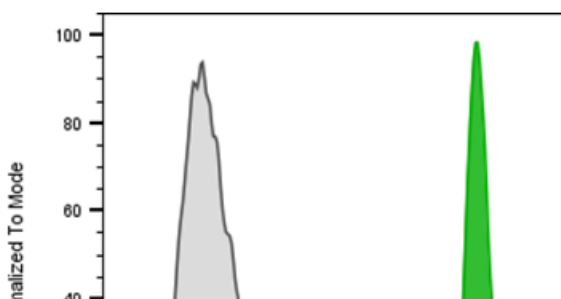
PRODUCT DETAILS

Clone:	104
Application:	Flow Cytometry
Reactivity:	Mouse
Format:	FITC
Isotype:	Mouse IgG2a
Antibody Type:	Monoclonal
Formulation:	Phosphate-buffered solution, pH 7.2, containing 0.09% sodium azide and 0.2% (w/v) BSA
Protein Concentration:	Supplied at a lot-specific concentration.
Storage&Handling:	The antibody solution should be stored undiluted between 2°C and 8°C, and protected from prolonged exposure to light. Do not freeze.
Recommended Usage:	For flow cytometric staining, it is recommended to use 5 µL of this reagent per 0.5-1.0 million cells in a 100 µL volume. Optimal reagent performance should be determined by titration for each specific application. FITC has an excitation max at 493 nm and an emission max at 525 nm.
Isotype Control:	301513

BACKGROUND INFORMATION

CD45.2 is a mouse alloantigen variant of CD45, expressed by Ly5.2-bearing mouse strains (e.g., A, AKR, BALB/c, CBA/Ca, CBA/J, C3H/He, C57BL, C57BR, C57L, C58, DBA/1, DBA/2, NZB, SWR, 129). CD45 is a 180-240 kDa receptor-type protein tyrosine phosphatase (PTP) expressed on all hematopoietic cells except mature erythrocytes and platelets. CD45.2 plays a crucial role in immune cell signaling, lymphocyte development, and activation.

PRODUCT DATA



Mouse splenocytes were stained either FITC Anti-Mouse CD45.2 clone104 (color-filled histogram) or an isotype control (gray histogram).