

Technical Data Sheet

Anti-Mouse/Human Ki-67

Catalog Number: 202401, 202402

Size: 100 ug, 500 ug

Target Name: Ki-67, Ki67

Regulatory Status: RUO

Product Details

Clone: K67AR2b

Application: FC

Reactivity: Human, Mouse

Format: Purified

Isotype: Rat IgG2b

Antibody Type: Monoclonal

Formulation: Phosphate-buffered solution, pH 7.2, containing 0.09% sodium azide

Protein Concentration: 0.5 mg/mL

Storage&Handling: The antibody solution should be stored between 2°C and 8°C

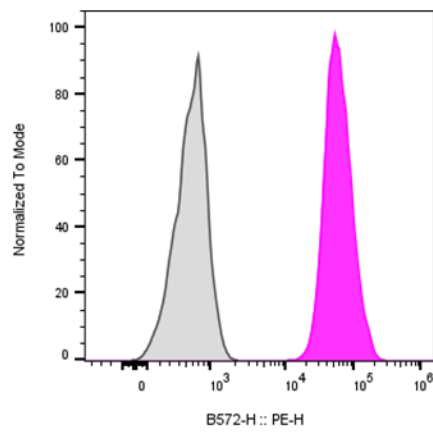
Recommended Usage: For flow cytometric staining, it is recommended to use less than 0.25 ug of this reagent per 0.5-1.0 million cells in a 100 µL volume. Optimal reagent performance should be determined by titration for each specific application.

Release Date: Nov-25

Background Information

Ki-67 is a nuclear protein expressed as two isoforms (395 and 345 kDa), each containing a forkhead-associated (FHA) domain and 16 Ki-67 repeats that include the epitope recognized by the Ki-67 monoclonal antibody. Ki-67 interacts with proteins such as Hklp2, hNIFK, and chromobox homologs 1, 3, and 5. Its expression is restricted to proliferating cells in the G1, S, G2, and M phases of the cell cycle, making it a robust marker of cell proliferation. Ki-67 is widely used in oncology as a prognostic factor, in studies of lymphocyte and myocyte proliferation, and as a marker of neuronal proliferation in various neuropathologies.

Product Data



Human 293 cells stained either purified Anti-Mouse/Human Ki-67 clone K67AR2b (color-filled histogram) or an isotype control (gray histogram), followed by PE anti-Rat IgG.