

## Technical Data Sheet

### iF647 Anti-Mouse/Human Ki-67

**Catalog Number:** 202405, 202406

**Size:** 25 tests, 100 tests

**Target Name:** Ki-67, Ki67

**Regulatory Status:** RUO

#### Product Details

---

**Clone:** K67AR2b

**Application:** FC

**Reactivity:** Human, Mouse

**Format:** iF647

**Isotype:** Rat IgG2b

**Antibody Type:** Monoclonal

**Formulation:** Phosphate-buffered solution, pH 7.2, containing 0.09% sodium azide and 0.2% (w/v) BSA

**Protein Concentration:** Supplied at a lot-specific concentration.

**Storage&Handling:** The antibody solution should be stored undiluted between 2°C and 8°C, and protected from prolonged exposure to light. Do not freeze.

**Recommended Usage:** For flow cytometric staining, it is recommended to use 5 µL of this reagent per 0.5-1.0 million cells in a 100 µL volume. Optimal reagent performance should be determined by titration for each specific application.

**Excitation Laser:** Red Laser (633 nm)

**Release Date:** Nov-25

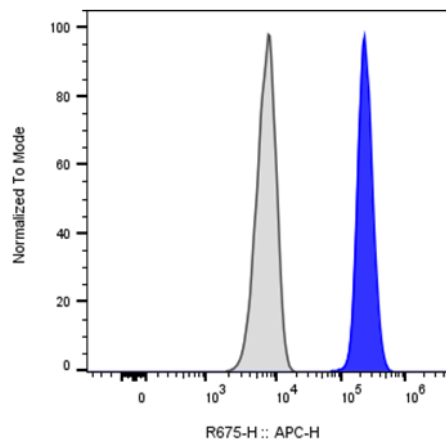
#### Background Information

---

Ki-67 is a nuclear protein expressed as two isoforms (395 and 345 kDa), each containing a forkhead-associated (FHA) domain and 16 Ki-67 repeats that include the epitope recognized by the Ki-67 monoclonal antibody. Ki-67 interacts with proteins such as Hklp2, hNIFK, and chromobox homologs 1, 3, and 5. Its expression is restricted to proliferating cells in the G1, S, G2, and M phases of the cell cycle, making it a robust marker of cell proliferation. Ki-67 is widely used in oncology as a prognostic factor, in studies of lymphocyte and myocyte proliferation, and as a marker of neuronal proliferation in various neuropathologies.

#### Product Data

---



Human 293 cells stained either iF647 Anti-Mouse/Human Ki-67 clone K67AR2b (color-filled histogram) or an isotype control (gray histogram).