

## Technical Data Sheet

### iF647 Anti-His tag Antibody

**Catalog Number:** 300703, 300704  
**Size:** 25 tests, 100 tests  
**Target Name:** His Tag, histidine-tag  
**Regulatory Status:** RUO

#### Product Details

---

**Clone:** 1005AB  
**Application:** FC  
**Reactivity:** His-tag, All Species Expected  
**Format:** iF647  
**Isotype:** Rabbit IgG  
**Antibody Type:** Monoclonal  
**Formulation:** Phosphate-buffered solution, pH 7.2, containing 0.09% sodium azide and 0.2% (w/v) BSA  
**Protein Concentration:** Supplied at a lot-specific concentration.  
**Storage&Handling:** The antibody solution should be stored undiluted between 2°C and 8°C, and protected from prolonged exposure to light. Do not freeze.  
**Recommended Usage:** For flow cytometric staining, it is recommended to use 5 uL of this reagent per 0.5-1.0 million cells in a 100 µL volume. Optimal reagent performance should be determined by titration for each specific application.  
**Excitation Laser:** Red Laser (633 nm)  
**Release Date:** Nov-25

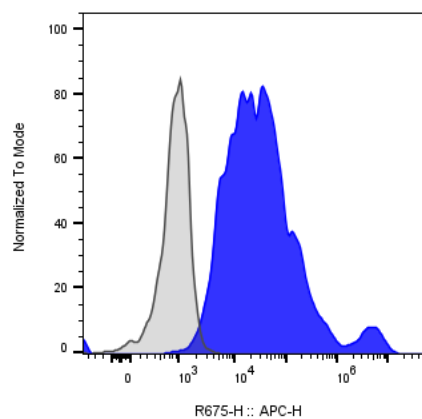
#### Background Information

---

This antibody is raised against a synthetic 6xHis peptide. It can be used for Western blotting to detect His-tagged proteins (6xHis or more) at the N-terminus, C-terminus, or within the protein sequence. It is also suitable for flow cytometry or immunofluorescent staining of His-tagged proteins.

#### Product Data

---



Multi-tag (including His tag) transmembrane protein transfected CHO cells were stained either iF647 Anti-His antibody clone 1005AB (color-filled histogram) or an isotype control (gray histogram).