

Technical Data Sheet

iF647 Anti-c-Myc Antibody

Catalog Number: 300803, 300804
Size: 25 tests, 100 tests
Target Name: Myc tag, Myc epitope
Regulatory Status: RUO

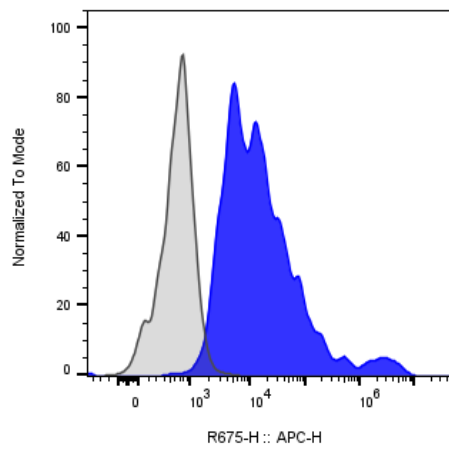
Product Details

Clone: 9E10
Application: FC
Reactivity: Myc tag, All Species Expected
Format: iF647
Isotype: Mouse IgG1
Antibody Type: Monoclonal
Formulation: Phosphate-buffered solution, pH 7.2, containing 0.09% sodium azide and 0.2% (w/v) BSA
Protein Concentration: Supplied at a lot-specific concentration.
Storage&Handling: The antibody solution should be stored undiluted between 2°C and 8°C, and protected from prolonged exposure to light. Do not freeze.
Recommended Usage: For flow cytometric staining, it is recommended to use 5 µL of this reagent per 0.5-1.0 million cells in a 100 µL volume. Optimal reagent performance should be determined by titration for each specific application.
Excitation Laser: Red Laser (633 nm)
Release Date: Nov-25

Background Information

The 9E10 monoclonal antibody was generated by immunizing mice with a synthetic peptide corresponding to amino acids 408–438 (E E Q K L I S E E D L L R K R R E Q L K H K L E Q L R N S C A) of the human c-Myc protein. It specifically recognizes the epitope EQKLISEEDL, a defined sequence within the human c-Myc protein

Product Data



Multi-tag (including Myc tag) transmembrane protein transfected CHO cells were stained either iF647 Anti-Myc antibody clone 9E10 (color-filled histogram) or an isotype control (gray histogram).