

Biotin Anti-c-Myc Antibody

Catalog Number:	300805, 300806
Size:	25 ug, 100 ug
Target Name:	Myc tag, Myc epitope
Regulatory Status:	RUO

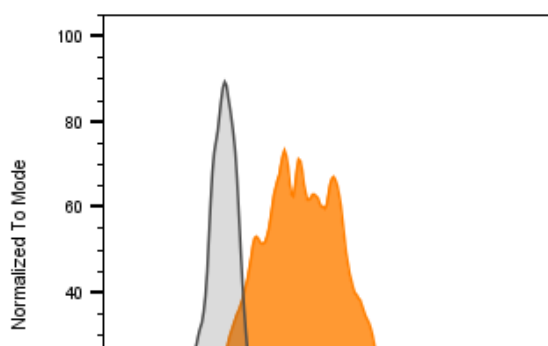
PRODUCT DETAILS

Clone:	9E10
Application:	ELISA, WB, Flow Cytometry
Reactivity:	Myc tag, All Species Expected
Format:	Biotin
Isotype:	Mouse IgG1
Antibody Type:	Monoclonal
Formulation:	Phosphate-buffered solution, pH 7.2, containing 0.09% sodium azide and 0.2% (w/v) BSA
Protein Concentration:	0.2 mg/mL
Storage&Handling:	Quick spin the vial after receiving. The antibody solution should be stored undiluted between 2°C and 8°C, and protected from prolonged exposure to light. Do not freeze.
Recommended Usage:	For ELISA applications, this antibody can be used at 0.5-1.0 µg/mL as the detection antibody. However, optimization by titration is suggested for best performance in each specific application.
Isotype Control:	301425

BACKGROUND INFORMATION

The 9E10 monoclonal antibody was generated by immunizing mice with a synthetic peptide corresponding to amino acids 408-438 (E E Q K L I S E E D L L R K R R E Q L K H K L E Q L R N S C A) of the human c-Myc protein. It specifically recognizes the epitope EQKLISEEDL, a defined sequence within the human c-Myc protein

PRODUCT DATA



Multi-tag (including Myc tag) transmembrane protein transfected CHO cells were stained either Biotin Anti-Myc antibody clone 9E10 (color-filled histogram) or an isotype control (gray histogram), followed by SA-PE.