

PB Mouse IgG2a Isotype Control Antibody

| | |
|---------------------------|-----------------------------|
| Catalog Number: | 301515, 301516 |
| Size: | 25 ug, 100 ug |
| Target Name: | Mouse IgG2a Isotype Control |
| Regulatory Status: | RUO |

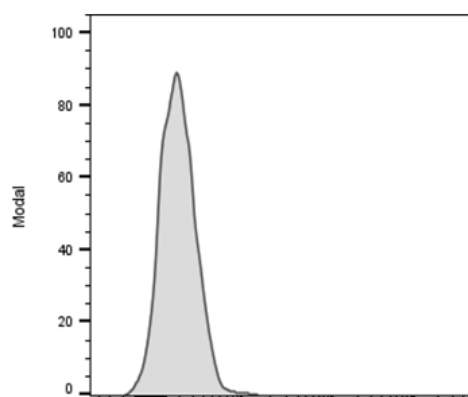
PRODUCT DETAILS

| | |
|-------------------------------|--|
| Clone: | MOPC-173 |
| Application: | Flow Cytometry |
| Reactivity: | N/A |
| Format: | PB |
| Isotype: | Mouse IgG2a |
| Antibody Type: | Monoclonal |
| Formulation: | Phosphate-buffered solution, pH 7.2, containing 0.09% sodium azide and 0.2% (w/v) BSA |
| Protein Concentration: | 0.2mg/mL |
| Storage&Handling: | The antibody solution should be stored undiluted between 2°C and 8°C, and protected from prolonged exposure to light. Do not freeze. |
| Recommended Usage: | Use at concentrations comparable to those used for the target-specific antibody. Pacific Blue has an excitation max at 404 nm and an emission max at 455 nm. |
| Excitation Laser: | Violet laser (405nm) |

BACKGROUND INFORMATION

The clone of MOPC-173 antibody is mouse isotype IgG2a, k. The MOPC-21 immunoglobulin has unknown specificity. It is chosen as an isotype control after screening on a variety of resting, activated, live, and fixed mouse, rat and human tissues.

PRODUCT DATA



Human PBMC were stained PB Mouse IgG2a Isotype Control clone MOPC-173 (gray histogram).