

## PB Rabbit IgG, $\kappa$ 2 Isotype Control Antibody

<b>Catalog Number:</b>	301811, 301812
<b>Size:</b>	25 ug, 100 ug
<b>Target Name:</b>	Rabbit IgG, $\kappa$ 2 Isotype Control
<b>Regulatory Status:</b>	RUO

### PRODUCT DETAILS

---

<b>Clone:</b>	MOPC-21-B2
<b>Application:</b>	Flow Cytometry
<b>Reactivity:</b>	N/A
<b>Format:</b>	PB
<b>Isotype:</b>	Rabbit IgG, $\kappa$ 2
<b>Antibody Type:</b>	Monoclonal
<b>Formulation:</b>	Phosphate-buffered solution, pH 7.2, containing 0.09% sodium azide and 0.2% (w/v) BSA
<b>Protein Concentration:</b>	0.2mg/mL
<b>Storage&amp;Handling:</b>	The antibody solution should be stored undiluted between 2°C and 8°C, and protected from prolonged exposure to light. Do not freeze.
<b>Recommended Usage:</b>	Use at concentrations comparable to those used for the target-specific antibody. Pacific Blue has an excitation max at 404 nm and an emission max at 455 nm.
<b>Excitation Laser:</b>	Violet laser (405nm)

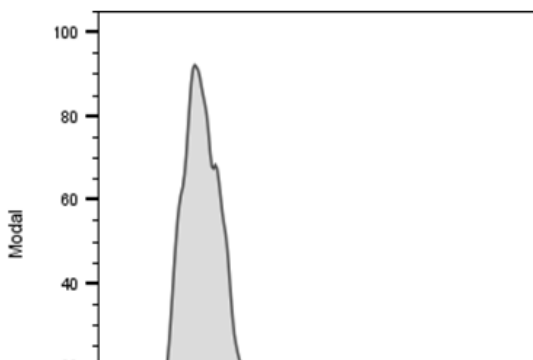
### BACKGROUND INFORMATION

---

This antibody is a clone of the MOPC-21 variable region with a rabbit IgG,  $\kappa$ 2 isotype. MOPC-21 immunoglobulin has an unknown antigen specificity and is commonly used as an isotype control. It was selected based on screening across a variety of resting and activated cells, as well as live and fixed tissues from mouse, rat, and human sources.

### PRODUCT DATA

---



Human PBMC were stained PB Rabbit IgG,  $\kappa$ 2 Isotype Control, clone MOPC-21-B2 (gray histogram).