

PB Rabbit IgG, κ 2 Isotype Control Antibody

Catalog Number:	301811, 301812
Size:	25 ug, 100 ug
Target Name:	Rabbit IgG, κ 2 Isotype Control
Regulatory Status:	RUO

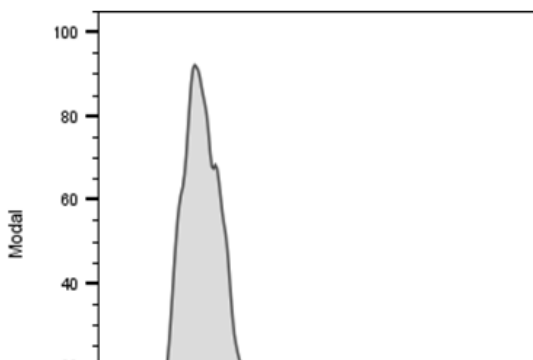
PRODUCT DETAILS

Clone:	MOPC-21-B2
Application:	Flow Cytometry
Reactivity:	N/A
Format:	PB
Isotype:	Rabbit IgG, κ 2
Antibody Type:	Monoclonal
Formulation:	Phosphate-buffered solution, pH 7.2, containing 0.09% sodium azide and 0.2% (w/v) BSA
Protein Concentration:	0.2mg/mL
Storage&Handling:	The antibody solution should be stored undiluted between 2°C and 8°C, and protected from prolonged exposure to light. Do not freeze.
Recommended Usage:	Use at concentrations comparable to those used for the target-specific antibody. Pacific Blue has an excitation max at 404 nm and an emission max at 455 nm.
Excitation Laser:	Violet laser (405nm)

BACKGROUND INFORMATION

This antibody is a clone of the MOPC-21 variable region with a rabbit IgG, κ 2 isotype. MOPC-21 immunoglobulin has an unknown antigen specificity and is commonly used as an isotype control. It was selected based on screening across a variety of resting and activated cells, as well as live and fixed tissues from mouse, rat, and human sources.

PRODUCT DATA



Human PBMC were stained PB Rabbit IgG, κ 2 Isotype Control, clone MOPC-21-B2 (gray histogram).