

Technical Data Sheet

PE Anti-Human CD28

Catalog Number: 106209, 106210

Size: 25 tests, 100 tests

Target Name: CD28, Tp44

Regulatory Status: RUO

Product Details

Clone: CD28.2

Application: FC

Reactivity: Human

Format: PE

Isotype: Mouse IgG1

Antibody Type: Monoclonal

Formulation: Phosphate-buffered solution, pH 7.2, containing 0.09% sodium azide and 0.2% (w/v) BSA

Protein Concentration: Supplied at a lot-specific concentration.

Storage&Handling: The antibody solution should be stored undiluted between 2°C and 8°C, and protected from prolonged exposure to light. Do not freeze.

Recommended Usage: For flow cytometric staining, it is recommended to use 5 µL of this reagent per 0.5-1.0 million cells in a 100 µL volume. Optimal reagent performance should be determined by titration for each specific application.

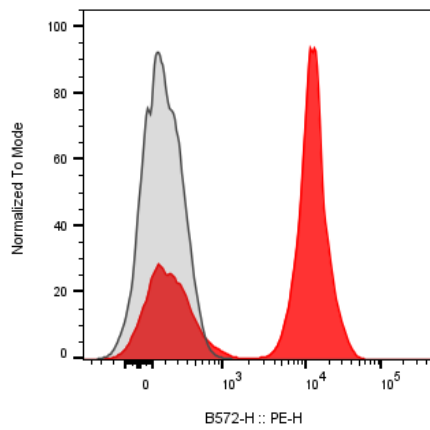
Excitation Laser: Blue Laser (488 nm) Green/Yellow laser (532/561nm)

Release Date: Dec-25

Background Information

CD28 (Cluster of Differentiation 28) is a protein expressed on T cells that provides essential co-stimulatory signals required for T cell activation and survival. CD28 is a 44 kD disulfide-linked homodimeric type I glycoprotein. It is a member of the immunoglobulin superfamily and is also known as T44 or Tp44. CD28 is expressed on most T lineage cells, NK cell subsets, and plasma cells. CD28 binds both CD80 and CD86 using a highly conserved motif MYPPY in the CDR3-like loop. CD28 is considered a major costimulatory molecule, inducing T lymphocyte activation and IL-2 synthesis, and preventing cell death.

Product Data



Human peripheral blood lymphocytes was stained with PE Anti-Human CD28 clone CD28.2 (color-filled) or an isotype control (gray histogram).