

## Technical Data Sheet

### PE/iF594 Anti-Human CD45

**Catalog Number:** 106517, 106518

**Size:** 25 tests, 100 tests

**Target Name:** CD45, LCA, T200

**Regulatory Status:** RUO

#### Product Details

---

**Clone:** HI30

**Application:** FC

**Reactivity:** Human

**Format:** PE/iF594

**Isotype:** Mouse IgG1

**Antibody Type:** Monoclonal

**Formulation:** Phosphate-buffered solution, pH 7.2, containing 0.09% sodium azide and 0.2% (w/v) BSA

**Protein Concentration:** Supplied at a lot-specific concentration.

**Storage&Handling:** The antibody solution should be stored undiluted between 2°C and 8°C, and protected from prolonged exposure to light. Do not freeze.

**Recommended Usage:** For flow cytometric staining, it is recommended to use 5 µL of this reagent per 0.5-1.0 million cells in a 100 µL volume. Optimal reagent performance should be determined by titration for each specific application.

**Excitation Laser:** Blue Laser (488 nm), Green Laser (532 nm)/Yellow-Green Laser (561 nm)

**Release Date:** Dec-25

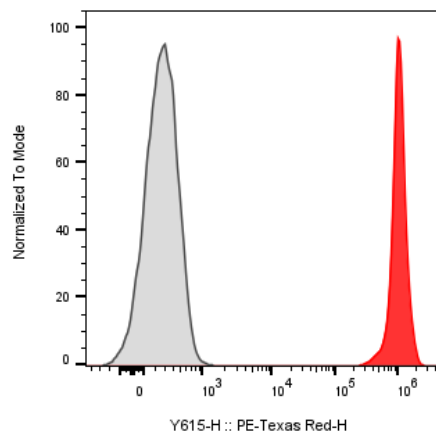
#### Background Information

---

The CD45 antigen (CD stands for cluster of differentiation) is a protein which was originally called leukocyte common antigen. The protein encoded by this gene is a member of the protein tyrosine phosphatase (PTP) family. CD45 is a 180-240 kD single chain type I membrane glycoprotein also known as leukocyte common antigen (LCA) and T200. It is a tyrosine phosphatase expressed on the plasma membrane of all hematopoietic cells, except erythrocytes and platelets. CD45 is a signaling molecule that regulates a variety of cellular processes including cell growth, differentiation, cell cycle, and oncogenic transformation.

#### Product Data

---



Human peripheral blood lymphocytes was stained with PE/iF594 Anti-Human CD45 clone HI30 (color-filled histogram) or an isotype control (gray histogram).