

## FITC Anti-Human CD27 Antibody

<b>Catalog Number:</b>	106603, 106604
<b>Size:</b>	25 tests, 100 tests
<b>Target Name:</b>	CD27, TNFRSF7, S152, T14
<b>Regulatory Status:</b>	RUO

### PRODUCT DETAILS

---

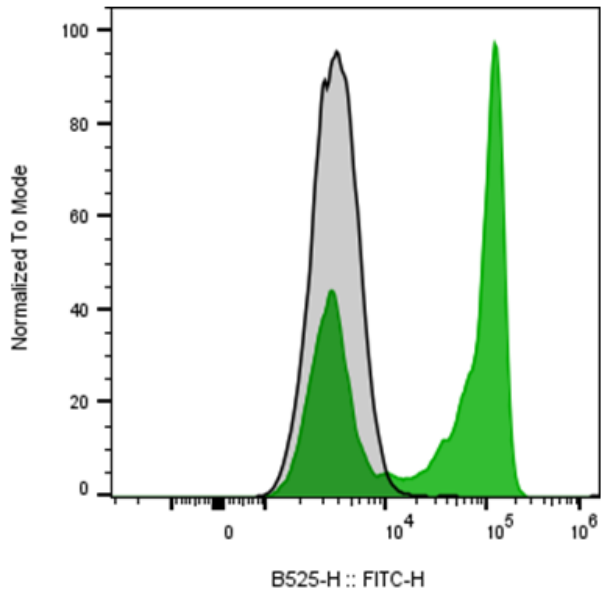
<b>Clone:</b>	027AM1
<b>Application:</b>	Flow Cytometry
<b>Reactivity:</b>	Human
<b>Format:</b>	FITC
<b>Isotype:</b>	Mouse IgG1
<b>Antibody Type:</b>	Monoclonal
<b>Formulation:</b>	Phosphate-buffered solution, pH 7.2, containing 0.09% sodium azide and 0.2% (w/v) BSA
<b>Protein Concentration:</b>	Supplied at a lot-specific concentration.
<b>Storage&amp;Handling:</b>	The antibody solution should be stored undiluted between 2°C and 8°C, and protected from prolonged exposure to light. Do not freeze.
<b>Recommended Usage:</b>	For flow cytometric staining, it is recommended to use 5 µL of this reagent per 0.5-1.0 million cells in a 100 µL volume. Optimal reagent performance should be determined by titration for each specific application. FITC has an excitation max at 493 nm and an emission max at 525 nm.
<b>Excitation Laser:</b>	Blue Laser (488 nm)
<b>Isotype Control:</b>	301415

### BACKGROUND INFORMATION

---

CD27 is a 50-55 kDa type I transmembrane glycoprotein, also known as S152 and T14, and is a lymphocyte-specific member of the tumor necrosis factor receptor (TNFR) superfamily, which also includes CD30 and CD40. Members of this superfamily are broadly involved in the regulation of cell proliferation, differentiation, and apoptosis. Unlike many other TNFR/TNF family members, expression of CD27 and its ligand CD70 is predominantly confined to lymphocytes, reflecting their specialized role in the adaptive immune response.

## PRODUCT DATA



Human peripheral blood lymphocytes was stained with FITC Anti-Human CD27 clone 027AM1 (color-filled histogram) or an isotype control (gray histogram) .

This product is supplied subject to the terms and conditions at [www.innocyto.com/web/terms.php](http://www.innocyto.com/web/terms.php) and may only be used as provided in the stated terms. Products are for Research Use Only.