

## Technical Data Sheet

### PE Anti-Human CD3

**Catalog Number:** 106907, 106908

**Size:** 25 tests, 100 tests

**Target Name:** CD3, T3, CD3?

**Regulatory Status:** RUO

#### Product Details

---

**Clone:** Hit3a

**Application:** FC

**Reactivity:** Human

**Format:** PE

**Isotype:** Mouse IgG2a

**Antibody Type:** Monoclonal

**Formulation:** Phosphate-buffered solution, pH 7.2, containing 0.09% sodium azide and 0.2% (w/v) BSA

**Protein Concentration:** Supplied at a lot-specific concentration.

**Storage&Handling:** The antibody solution should be stored undiluted between 2°C and 8°C, and protected from prolonged exposure to light. Do not freeze.

**Recommended Usage:** For flow cytometric staining, it is recommended to use 5 µL of this reagent per 0.5-1.0 million cells in a 100 µL volume. Optimal reagent performance should be determined by titration for each specific application.

**Excitation Laser:** Blue Laser (488 nm), Green Laser (532 nm)/Yellow-Green Laser (561 nm)

**Release Date:** Dec-25

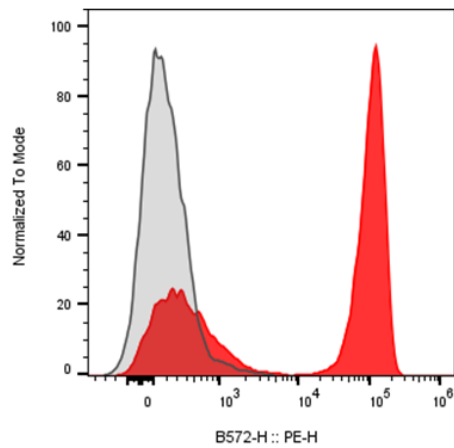
#### Background Information

---

CD3 (cluster of differentiation 3) is a protein complex and T cell co-receptor. CD3? is a 20 kD chain of the CD3/T-cell receptor (TCR) complex which is composed of two CD3?, one CD3?, one CD3?, one CD3? (CD247), and a T-cell receptor (?? or ??) heterodimer. It is found on all mature T lymphocytes, NK-T cells, and some thymocytes. CD3, also known as T3, is a member of the immunoglobulin superfamily that plays a role in antigen recognition, signal transduction, and T cell activation.

#### Product Data

---



Human peripheral blood lymphocytes was stained with PE Anti-Human CD3 clone HIT3? (color-filled histogram) or an isotype control (gray histogram).