

Technical Data Sheet

iF488 Anti-Human CD25

Catalog Number: 107503, 107504

Size: 25 tests, 100 tests

Target Name: IL-2 receptor α chain, Low affinity IL-2R, IL-2R β chain

Regulatory Status: RUO

Product Details

Clone: M-A251

Application: FC

Reactivity: Human

Format: iF488

Isotype: Mouse IgG1

Antibody Type: Monoclonal

Formulation: Phosphate-buffered solution, pH 7.2, containing 0.09% sodium azide and 0.2% (w/v) BSA

Protein Concentration: Supplied at a lot-specific concentration.

Storage&Handling: The antibody solution should be stored undiluted between 2°C and 8°C, and protected from prolonged exposure to light. Do not freeze.

Recommended Usage: For flow cytometric staining, it is recommended to use 5 μ L of this reagent per 0.5-1.0 million cells in a 100 μ L volume. Optimal reagent performance should be determined by titration for each specific application.

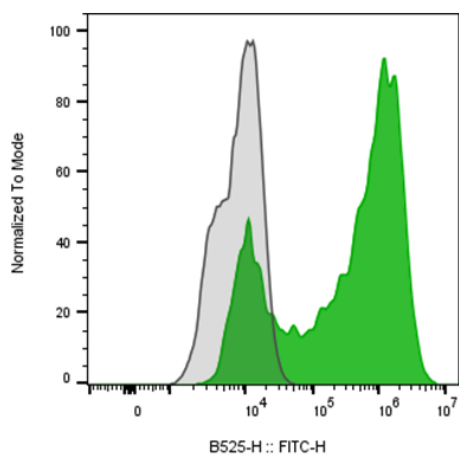
Excitation Laser: Blue Laser (488 nm)

Release Date: Dec-25

Background Information

The interleukin-2 receptor alpha chain (also called Tac antigen, P55, and mainly CD25) is a protein involved in the assembly of the high-affinity interleukin-2 receptor, consisting of alpha (IL2RA), beta (IL2RB) and the common gamma chain (IL2RG). As the name indicates, this receptor interacts with interleukin-2, a pleiotropic cytokine which plays an important role in immune homeostasis. It is expressed on progenitor lymphocytes, activated T and B cells, and activated monocytes/macrophages.

Product Data



Anti-human CD3 and Anti-Human CD28 stimulated human peripheral blood lymphocytes was stained with iF488 Anti-Human CD25 clone M-A251 (color-filled histogram) or an isotype control (gray histogram).