

PE Anti-Human TCR Vb5.2/5.3 Antibody

Catalog Number:	107605, 107606
Size:	25 tests, 100 tests
Target Name:	TCR Vb5.2/5.3
Regulatory Status:	RUO

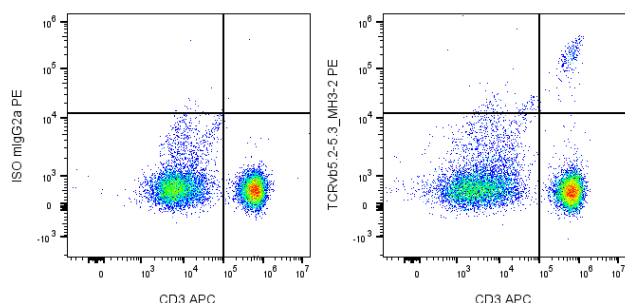
PRODUCT DETAILS

Clone:	MH3-2
Application:	Flow Cytometry
Reactivity:	Human
Format:	PE
Isotype:	Mouse IgG2a
Antibody Type:	Monoclonal
Formulation:	Phosphate-buffered solution, pH 7.2, containing 0.09% sodium azide and 0.2% (w/v) BSA
Protein Concentration:	Supplied at a lot-specific concentration.
Storage&Handling:	The antibody solution should be stored undiluted between 2°C and 8°C, and protected from prolonged exposure to light. Do not freeze.
Recommended Usage:	For flow cytometric staining, it is recommended to use 5 µL of this reagent per 0.5-1.0 million cells in a 100 µL volume. Optimal reagent performance should be determined by titration for each specific application. PE has an excitation max at 565 nm and an emission max at 575 nm.
Excitation Laser:	Blue Laser (488 nm) Green/Yellow laser (532/561nm)
Isotype Control:	301509

BACKGROUND INFORMATION

Vβ5 T cell receptor (TCR Vβ5) is a variant of the TCR β chain which is heterodimerized with TCR α chain and expressed on a subset of αβ+ T cells. TCR α/β recognizes peptides presented by the MHC molecules and initiates T cell mediated immune responses. Patients with multiple sclerosis present an expansion of Vβ5.2+/5.3+ autoreactive T cells.

PRODUCT DATA



Human peripheral blood lymphocytes stained with APC Anti-human CD3 and either PE Anti-Human TCR Vb5.2/5.3 (TRbV28) clone MH3-2 (right panel) or an isotype control (left

panel).

This product is supplied subject to the terms and conditions at www.innocyto.com/web/terms.php and may only be used as provided in the stated terms. Products are for Research Use Only.