

Technical Data Sheet

PE Anti-Human CD8a

Catalog Number: 108305, 108306

Size: 25 tests, 100 tests

Target Name: CD8, T8, Leu2

Regulatory Status: RUO

Product Details

Clone: RPA-T8

Application: FC

Reactivity: Human

Format: PE

Isotype: Mouse IgG1

Antibody Type: Monoclonal

Formulation: Phosphate-buffered solution, pH 7.2, containing 0.09% sodium azide and 0.2% (w/v) BSA

Protein Concentration: Supplied at a lot-specific concentration.

Storage&Handling: The antibody solution should be stored undiluted between 2°C and 8°C, and protected from prolonged exposure to light. Do not freeze.

Recommended Usage: For flow cytometric staining, it is recommended to use 5 µL of this reagent per 0.5-1.0 million cells in a 100 µL volume. Optimal reagent performance should be determined by titration for each specific application.

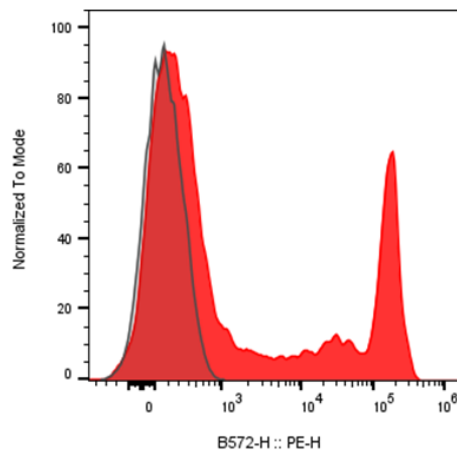
Excitation Laser: Blue Laser (488 nm) Green/Yellow laser (532/561nm)

Release Date: Dec-25

Background Information

CD8 (cluster of differentiation 8) is a transmembrane glycoprotein that serves as a co-receptor for the T-cell receptor (TCR). Along with the TCR, the CD8 co-receptor plays a role in T cell signaling and aiding with cytotoxic T cell-antigen interactions. The CD8 co-receptor is predominantly expressed on the surface of cytotoxic T cells, but can also be found on natural killer cells, cortical thymocytes, and dendritic cells. The CD8 molecule is a marker for cytotoxic T cell population. It is expressed in T cell lymphoblastic lymphoma and hypo-pigmented mycosis fungoides.

Product Data



Human peripheral blood lymphocytes was stained with PE Anti-Human CD8 clone RPA-T8 (color-filled) or an isotype control (gray histogram).