

## Technical Data Sheet

### iF647 Anti-Human CD8a

**Catalog Number:** 108307, 108308

**Size:** 25 tests, 100 tests

**Target Name:** CD8, T8, Leu2

**Regulatory Status:** RUO

#### Product Details

---

**Clone:** RPA-T8

**Application:** FC

**Reactivity:** Human

**Format:** iF647

**Isotype:** Mouse IgG1

**Antibody Type:** Monoclonal

**Formulation:** Phosphate-buffered solution, pH 7.2, containing 0.09% sodium azide and 0.2% (w/v) BSA

**Protein Concentration:** Supplied at a lot-specific concentration.

**Storage&Handling:** The antibody solution should be stored undiluted between 2°C and 8°C, and protected from prolonged exposure to light. Do not freeze.

**Recommended Usage:** For flow cytometric staining, it is recommended to use 5 µL of this reagent per 0.5-1.0 million cells in a 100 µL volume. Optimal reagent performance should be determined by titration for each specific application.

**Excitation Laser:** Red Laser (633 nm)

**Release Date:** Dec-25

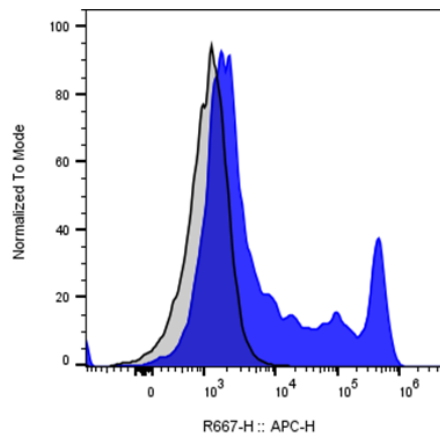
#### Background Information

---

CD8 (cluster of differentiation 8) is a transmembrane glycoprotein that serves as a co-receptor for the T-cell receptor (TCR). Along with the TCR, the CD8 co-receptor plays a role in T cell signaling and aiding with cytotoxic T cell-antigen interactions. The CD8 co-receptor is predominantly expressed on the surface of cytotoxic T cells, but can also be found on natural killer cells, cortical thymocytes, and dendritic cells. The CD8 molecule is a marker for cytotoxic T cell population. It is expressed in T cell lymphoblastic lymphoma and hypo-pigmented mycosis fungoides.

#### Product Data

---



Human peripheral blood lymphocytes was stained with iF647 Anti-Human CD8 clone RPA-T8 (color-filled histogram) or an isotype control (gray histogram) .