

## Technical Data Sheet

### FITC Anti-Human CD45RA

**Catalog Number:** 109411, 109412  
**Size:** 25 tests, 100 tests  
**Target Name:** CD45RA, GP180, LY5, LCA, PTPRC  
**Regulatory Status:** RUO

#### Product Details

---

**Clone:** HI100  
**Application:** FC  
**Reactivity:** Human  
**Format:** FITC  
**Isotype:** Mouse IgG2b  
**Antibody Type:** Monoclonal  
**Formulation:** Phosphate-buffered solution, pH 7.2, containing 0.09% sodium azide and 0.2% (w/v) BSA  
**Protein Concentration:** Supplied at a lot-specific concentration.  
**Storage&Handling:** The antibody solution should be stored undiluted between 2°C and 8°C, and protected from prolonged exposure to light. Do not freeze.  
**Recommended Usage:** For flow cytometric staining, it is recommended to use 5 µL of this reagent per 0.5-1.0 million cells in a 100 µL volume. Optimal reagent performance should be determined by titration for each specific application.  
**Excitation Laser:** Blue Laser (488 nm)  
**Release Date:** Dec-25

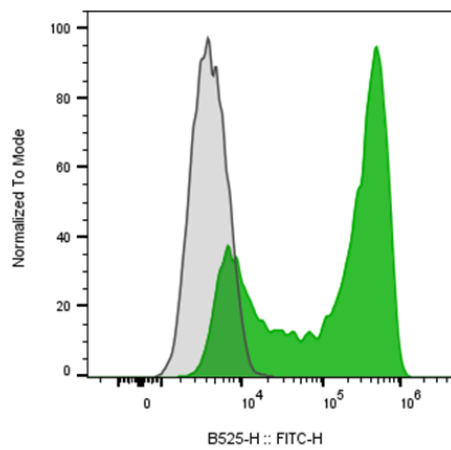
#### Background Information

---

CD45RA is a 205–220 kDa isoform of the CD45 tyrosine phosphatase, expressed on naive/resting T cells, medullary thymocytes, B cells, and monocytes. It is found on ~40–50% of peripheral CD4+ T cells, ~50% of CD8+ T cells, and subsets of B cells and monocytes. CD45RA enhances TCR and BCR signaling and associates with molecules like LPAP, CD1–CD4, and galectin-1. Its expression is regulated by cytokines and can be present on some activated T cells. CD45RA-specific antibodies (e.g., HI100) are widely used to identify naive T cells and study CD4+ suppressor/inducer subsets.

#### Product Data

---



Human peripheral blood lymphocytes was stained with FITC Anti-Human CD45RA clone HI100 (color-filled histogram) or an isotype control (gray histogram).