

## Technical Data Sheet

### APC Anti-Mouse Ly-6G

**Catalog Number:** 200713, 200714

**Size:** 25 tests, 100 tests

**Target Name:** Ly-6G, Lymphocyte antigen 6 complex, locus G, Gr-1

**Regulatory Status:** RUO

#### Product Details

---

**Clone:** 1A8

**Application:** FC

**Reactivity:** Mouse

**Format:** APC

**Isotype:** Rat IgG2a

**Antibody Type:** Monoclonal

**Formulation:** Phosphate-buffered solution, pH 7.2, containing 0.09% sodium azide and 0.2% (w/v) BSA

**Protein Concentration:** Supplied at a lot-specific concentration.

**Storage&Handling:** The antibody solution should be stored undiluted between 2°C and 8°C, and protected from prolonged exposure to light. Do not freeze.

**Recommended Usage:** For flow cytometric staining, it is recommended to use 5 µL of this reagent per 0.5-1.0 million cells in a 100 µL volume. Optimal reagent performance should be determined by titration for each specific application.

**Excitation Laser:** Red Laser (633 nm)

**Release Date:** Dec-25

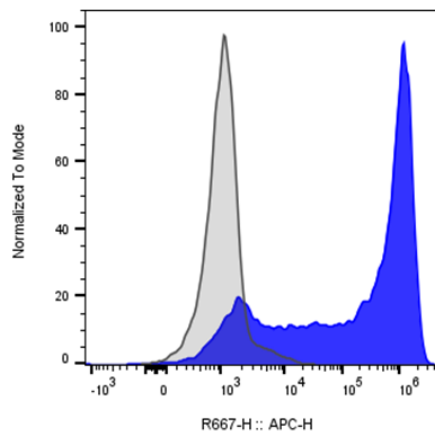
#### Background Information

---

Lymphocyte antigen 6 complex, locus G (Ly-6G), also known as Gr-1, is a 21–25 kDa glycosylphosphatidylinositol (GPI)-anchored surface protein. In mice, it is expressed predominantly on peripheral granulocytes, especially neutrophils, and on the majority of myeloid cells in the bone marrow. Ly-6G is transiently detected on developing monocytes but is stably and highly expressed on mature neutrophils. It plays important roles in neutrophil infiltration, recruitment, and migration, and associates with  $\alpha 2$  integrins CD11a and CD11b to regulate their expression and function. The natural ligand for Ly-6G remains unknown, and it is widely used as a specific marker for murine neutrophils in immunological studies.

#### Product Data

---



Mouse bone marrow cells were stained with either APC Anti-Mouse Ly-6G clone 1A8 (color-filled histogram) or an isotype control (gray histogram).