

## Technical Data Sheet

### PE/Cyanine7 Mouse IgG1 Isotype Control

**Catalog Number:** 301429  
**Size:** 25 ug  
**Target Name:** Mouse IgG1 Isotype Control  
**Regulatory Status:** RUO

#### Product Details

---

**Clone:** MOPC-21  
**Application:** FC  
**Reactivity:** N/A  
**Format:** PE/Cyanine7  
**Isotype:** Mouse IgG1  
**Antibody Type:** Monoclonal  
**Formulation:** Phosphate-buffered solution, pH 7.2, containing 0.09% sodium azide and 0.2% (w/v) BSA  
**Protein Concentration:** 0.2mg/mL  
**Storage&Handling:** The antibody solution should be stored undiluted between 2°C and 8°C, and protected from prolonged exposure to light. Do not freeze.  
**Recommended Usage:** Use at concentrations comparable to those used for the target-specific antibody  
**Excitation Laser:** Blue Laser (488 nm), Green Laser (532 nm)/Yellow-Green Laser (561 nm)  
**Release Date:** Dec-25

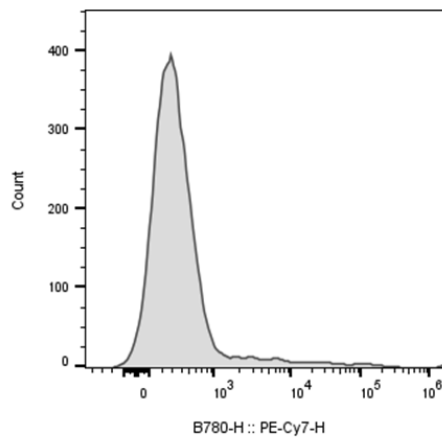
#### Background Information

---

The clone of MOPC-21 antibody is mouse isotype IgG1, k. The MOPC-21 immunoglobulin has unknown specificity. It is chosen as an isotype control after screening on a variety of resting, activated, live, and fixed mouse, rat and human tissues.

#### Product Data

---



Human peripheral blood lymphocytes was stained with PE/Cyanine7 Mouse IgG1 isotype control clone MOPC-21.