

Technical Data Sheet

iF647 Rat IgM isotype control

Catalog Number: 302702

Size: 25 ug

Target Name: Rat IgM isotype control

Regulatory Status: RUO

Product Details

Clone: RTK2118

Application: FC

Reactivity: N/A

Format: iF647

Isotype: Rat IgM

Antibody Type: Monoclonal

Formulation: Phosphate-buffered solution, pH 7.2, containing 0.09% sodium azide and 0.2% (w/v) BSA

Protein Concentration: 0.2 mg/mL

Storage&Handling: Store the antibody undiluted at 2°C to 8°C.

Recommended Usage: Use at concentrations comparable to those used for the target-specific antibody. Suggest to keep at lower than 0.1ug/test/

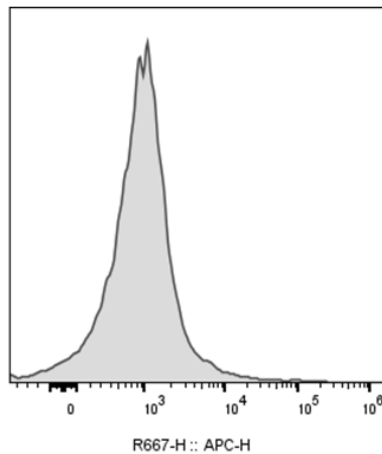
Excitation Laser: Red Laser (633 nm)

Release Date: Dec-25

Background Information

Immunoglobulin M (IgM) is the largest antibody isotype and the first produced during an initial immune response. Structurally, it forms a pentamer of five immunoglobulin units, giving it a high molecular weight of about 900 kDa and up to ten antigen-binding sites, though not all can engage simultaneously. Because of its size, IgM remains primarily in the serum and is produced largely in the spleen. Rat IgM functions similarly, serving as an early, broad-acting antibody produced by rat B cells to recognize and neutralize pathogens. It is widely used in research—as a control reagent, in diagnostic assays, and in studies of infection and immunity. Various established laboratory methods exist for producing and purifying rat IgM, making it a valuable tool for advancing immunological understanding and supporting the development of new disease treatments

Product Data



Mouse splenocytes were stained with iF647 Anti-Rat IgM clone RTK2118, an isotype control (gray histogram). Note that Rat IgM isotype control needs to be used at lower concentration around 0.1 ug/test.