

iF488 Anti-Human CD279 (PD1) Antibody

Catalog Number:	101409, 101410
Size:	25 tests, 100 tests
Target Name:	CD279, PD1, PD-1
Regulatory Status:	RUO

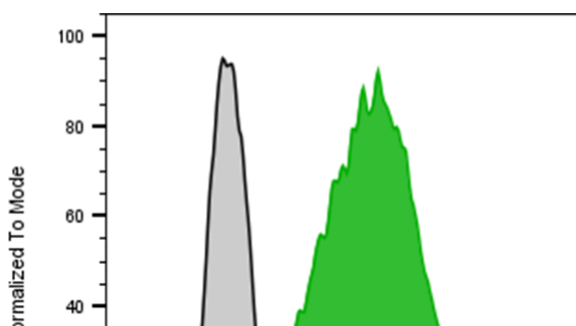
PRODUCT DETAILS

Clone:	279AM1
Application:	Flow Cytometry
Reactivity:	Human
Format:	iF488
Isotype:	Mouse IgG1
Antibody Type:	Monoclonal
Formulation:	Phosphate-buffered solution, pH 7.2, containing 0.09% sodium azide and 0.2% (w/v) BSA
Protein Concentration:	Supplied at a lot-specific concentration.
Storage&Handling:	The antibody solution should be stored undiluted between 2°C and 8°C, and protected from prolonged exposure to light. Do not freeze.
Recommended Usage:	For flow cytometric staining, it is recommended to use 5 uL of this reagent per 0.5-1.0 million cells in a 100 µL volume. Optimal reagent performance should be determined by titration for each specific application.
Excitation Laser:	Blue Laser (488 nm)

BACKGROUND INFORMATION

CD279, also known as Programmed cell death 1 (PD-1), cell surface receptor which binds to PD-L1 and PD-L2 ligands; functions as immune checkpoint with important role in down regulating immune system by preventing T-cell activation. Targeted by Nivolumab, Pembrolizumab and other monoclonal antibodies in a new class of cancer drugs. CD279 is expressed predominantly on activated T cells, B cells, and myeloid cells. The interaction with CD279 ligands results in inhibition of T cell proliferation and cytokine secretion.

PRODUCT DATA



Human peripheral blood lymphocytes stimulated with plate-coated anti-Human CD3 and CD28 for 3 days was stained with iF488 Anti-Human CD279 clone 279AM1 (color-filled

histogram) or an isotype control (gray histogram). Cells were treated with Fc block prior to the antibody staining.

This product is supplied subject to the terms and conditions at www.innocyto.com/web/terms.php and may only be used as provided in the stated terms. Products are for Research Use Only.