

PE Anti-Human CD127 (IL-7R α) Antibody

Catalog Number:	104809, 104810
Size:	25 tests, 100 tests
Target Name:	CD127, IL-7 receptor α chain, IL-7R α
Regulatory Status:	RUO

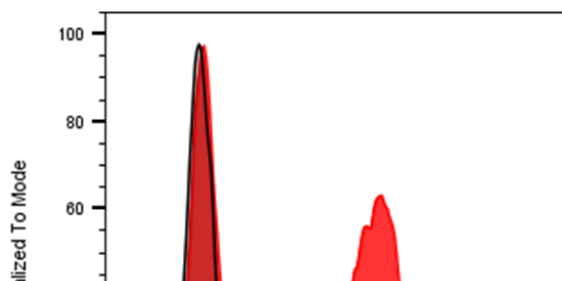
PRODUCT DETAILS

Clone:	127AB
Application:	Flow Cytometry
Reactivity:	Human
Format:	PE
Isotype:	Rabbit IgG
Antibody Type:	Monoclonal
Formulation:	Phosphate-buffered solution, pH 7.2, containing 0.09% sodium azide and 0.2% (w/v) BSA
Protein Concentration:	Supplied at a lot-specific concentration.
Storage&Handling:	The antibody solution should be stored undiluted between 2°C and 8°C, and protected from prolonged exposure to light. Do not freeze.
Recommended Usage:	For flow cytometric staining, it is recommended to use 5 μ L of this reagent per 0.5-1.0 million cells in a 100 μ L volume. Optimal reagent performance should be determined by titration for each specific application.
Excitation Laser:	Blue Laser (488 nm) Green/Yellow laser (532/561nm)

BACKGROUND INFORMATION

The interleukin-7 receptor is a protein found on the surface of cells. It is made up of two different smaller protein chains - i.e. it is a heterodimer, and consists of two subunits, interleukin-7 receptor- α (CD127) and common- γ chain receptor (CD132). The common- γ chain receptors is shared with various cytokines, including interleukin-2, -4, -9, and -15. Interleukin-7 receptor is expressed on various cell types, including naive and memory T cells and many others. Interleukin-7 receptor has been shown to play a critical role in the development of immune cells called lymphocytes.

PRODUCT DATA



Human peripheral blood lymphocytes was stained with PE Anti-Human CD127 clone 127AB (color-filled histogram) or an

isotype control (gray histogram).

This product is supplied subject to the terms and conditions at www.innocyto.com/web/terms.php and may only be used as provided in the stated terms. Products are for Research Use Only.